

UPGRADING EDUCATION TO INCREDIBLE

ASUS EDUCATION
SOLUTION GUIDE



CONTENT

INTRODUCTION

Why ASUS Education	3
ASUS Awards	4
Education DNA	5
Little London Case study	6

DURABILITY

Robust ASUS Superior Durability Test	9
Highest Military Grade Durability	10

SOLUTION

ASUS Education Software	13
Google teaching resource	16
Microsoft teaching resource	18

PRODUCT

ASUS Education Product Portfolio	21
ASUS ExpertBook	28
ASUS ExpertCenter	37
ASUS Chromebook	47
ASUS Vivobook	62
ASUS ProArt	64
ASUS ROG Laptop	67
ASUS ROG Desktop	69
ASUS Accessories	71
ASUS Trusted Education Solution	77

INTRODUCTION





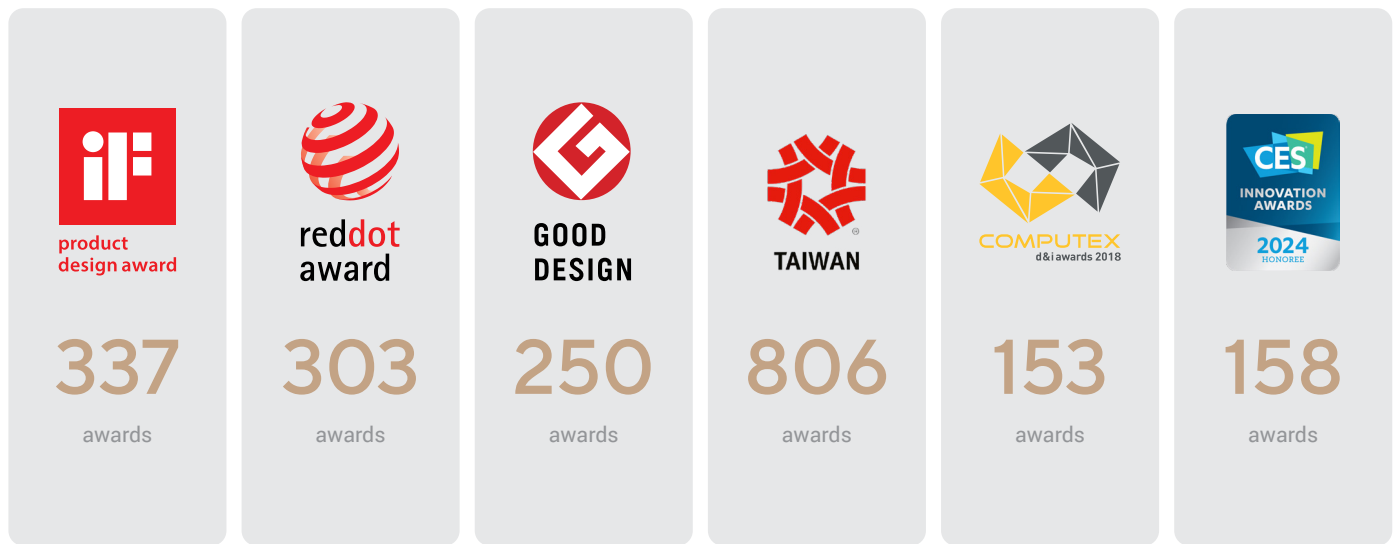
WHY ASUS EDUCATION

LEARNING SOLUTIONS YOU CAN RELY ON

ASUS is a prominent provider of technology innovations for education. Our products help students and teachers alike to maximize their learning potential — priming them for an exciting future. Every ASUS education solution is meticulously engineered to meet the needs of the modern classroom, be that at school, at home or on the go. We also offer world-class benefits, including, tailored solutions and a wide range of hardware, software and services specifically designed to help students and educators get the most out of their technology. When you choose ASUS, you're unlocking access to the very to latest educational tools, resources and technology — empowering students, teachers and parents to get the most out of each and every academic journey.

AWARDS AND RECOGNITION

Since established in 1990, ASUS has earned awards and recognitions from some of the most prestigious international organizations and media groups around the world. Each award is a testament to our relentless quest and commitment to creating solutions designed for everyone to joy.



UPGRADING EDUCATION TO INCREDIBLE



Tough enough to last

Durable and reliable

- Extreme resilience: Military-grade durability and rugged designs
- Solid foundation: World-leading ASUS motherboards
- Trustworthy platform: ASUS servers as Root-of-Trust resilience



Keeping you safer and healthier

Secure and hygienic protection

- Healthier study: ASUS Antimicrobial Guard
- Eye-friendly display: TÜV-certified low blue light
- Ironclad security: TPM 2.0 chips and Intel® Platform Firmware Resilience



Empower hybrid learning

Mobility and flexibility

- Nonstop productivity: All-day battery life
- Smooth connectivity: Ultrafast WiFi 6E and 4G LTE
- Ultimate mobility: Portable projectors and screens
- Cloud-based learning tools and crystal-clear, AI noise cancellation



Powerful technology

Innovations for collaboration

- Empowering education: Enhanced graphics performance, intuitive tools and features
- Clearer chat and video: AI noise-canceling audio and camera



Less downtime, more learning

IT management and maintenance

- Streamlined asset management: ASUS Control Center and AI Recovery¹
- Simplified device maintenance with tool-free and modular design
- Support Google Classroom, Microsoft Whiteboard and Windows Autopilot for easy classroom management



Education with peace of mind

Premium support and service

- World-class support with ASUS Business Support
- Seamless service and support: MyASUS software in Windows Recovery Environment (WinRE)
- ASUS Corporate Stable Model (CSM) program² provides a component-supply guarantee of up to 36 months

¹. Software availability may vary by region and require additional cost to purchase. Please check with your local ASUS retailer for details.

². Lifecycle support, program offering and supply status may vary by region. Please consult your local sales representative for more information.



Jill Wood, Headteacher

LITTLE LONDON CASE STUDY

ASUS was thrilled to work with and supply ASUS C202 Chromebooks to Little London Primary School in Leeds on this truly inspiring project. The Schools mission was to supply a Chromebook to every pupil in the School and to enable them to use a device both at School and also at home. Before the students received the ASUS Chromebooks, very few had access to a computer or Internet access.



Tell us a little bit about yourself and your school

My name is Jill Wood and I am the Head teacher of Little London, a three form entry primary school situated right in the heart of Leeds. A wonderful area to work but an area with lots of challenges. We have a very diverse population here at Little London with over 82 languages spoken across the school and wonderful parents who want the best for their children.

What were your main motivations in sourcing a new IT solution?

We have been trying to increase our digital ability across the school, to make sure technology was playing the right sort of part in our students' education. We were also uncomfortable with the fact that the children were only accessing technology on their set timetabled lessons so we wanted to see technology becoming a part of their everyday learning, whilst in school as well as at home.

What did you do to find the right device/supplier?

We had a long conversation with our IT support in school, a wonderful company called Next Generation IT. We expressed our thoughts

around implementing a solution to the school and they took that all away and ultimately suggested the ASUS C202 Chromebook. What swayed us on this decision was that this device seemed to be very robust, with a simplified operating system for the students as well as it being sustainable for the next few years without a need to refresh the device.

What has been the initial feedback from students and teachers?

The children were incredibly excited and they love the fact that they can take the device home and continue learning when not at school. Teachers have also been really positive about the Chromebooks and they have seen a massive increase in work from many of our children.

How has this new solution impacted your school?

The implementation of the Chromebooks has been a real positive for the school, we have seen those who wrote very little in books now writing a lot on their Chromebook, which is great to see. Everything is very secure on the devices so there is no risk of the children accessing all parts of internet and the children are now finding learning fun! So we feel all our children, all of our children are now part of the future.

DURABILITY



ROBUST ASUS SUPERIOR DURABILITY TEST



ASUS ensures that every component of commercial products delivers long and reliable service, no matter how tough the going gets.



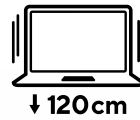
Hinge Test (Clamshell)

Up to 50,000 open/close cycles, replicating usage of 12 times per day for over 11 years.



Hinge Test (Flip)

Simulates entering and exiting flip mode 10,000 times, or 4 times per day for over 7 years.



Drop Test

Survives a single up to 120 cm1 accidental drop on its base, onto a concrete floor.



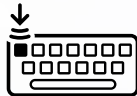
Rump Pressure Test

Both the lid and bottom side can withstand a 50 kg2 squashing force.



Panel Pressure Test

Display can survive a simulated weight of up to 30 kg of aircraft luggage on the lid without breaking3.



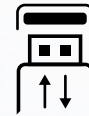
Keyboard Durability Test

Up to a 10,000,000 keystroke lifespan, simulating continuous typing for 4 hours per day for 6 years.



Keyboard Spill-resistant Test

Withstands water spills of up to 405 cc4.



Port Durability Test

Mimics a users connecting a USB Type-A device 5,000 times, or 3 times a day for over 4.5 years.



Twist Test

50,000 chassis twist tests to simulate normal handling and carrying with one hand 30 times per day for 4.5 years.

HIGHEST MILITARY-GRADE DURABILITY



Temperature Shock Test

Endure a sharp change of temperature from -51°C to 71°C three cycles for an hour.



Shock Test

Withstand 18 harsh shocks at the speed of 40G/11ms with power on.



Vibration Test

Withstand 10-500Hz physical vibrations for 60 min.



Sand & Dust Test

Resist ingress of particles with 1.2g/m3 density.



Altitude Test

Handle extreme 15,000-ft heights, with power on.



High Temperature Test

Endure 32°C~49°C for 3 x 24 hr. Cycles with power on.



Low Temperature Test

Endure -37°C~ -46°C for 3 x 24 hr. cycles with power on.



Explosive Atmosphere Test

Tested in a fuel-vapor environment with power on.



Fungus Test

28 days exposure to common fungi.



Shipboard Vibration Test

4-33Hz for 2 hours to mimic shipboard transit.



Freeze/Thaw Test

Withstand rapid 30°C to -10°C temperature change at 95% relative humidity.



Solar Radiation Test

Endure three 24-hour cycles of simulated radiation.



Humidity Test

Tolerate 95% relative humidity at temperatures of 30°C and 60°C.



Commercial products are remarkably robust with highest military-grade durability standards in the business-laptop marketplace. It endures multiple individual tests that adhere to the exacting US military-grade MIL-STD-810H standard.



SOLUTION





SOLUTION

EMPOWERING EDUCATION WITH ASUS SOLUTIONS

ASUS is passionate about delivering technology solutions that meet the evolving needs of teachers, parents and students. We offer an expansive portfolio of products and services that help realize the promise of digital learning, including personal computers, monitors, motherboards, graphics cards, routers, and much more.

UNLOCK LIMITLESS LEARNING WITH ASUS SOFTWARE

ASUS software simplifies asset-management processes for IT staff, as well as for students and educators.

ASUS Cloud Services

Ultimate online resource management

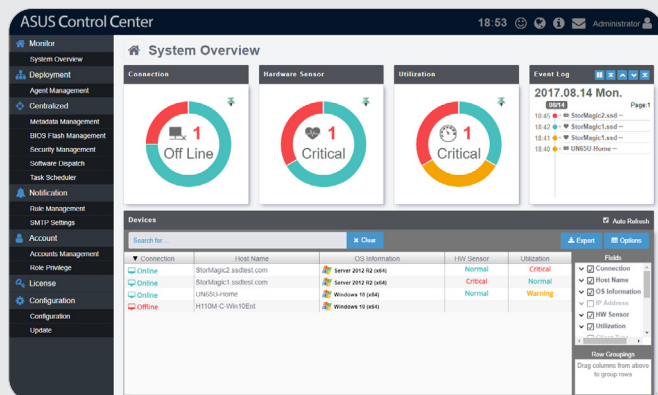
ASUS Cloud is a platform that integrates with multiple learning applications, providing rich and active learning experiences for students while making class management easier for educators. It also allows students and educators to store and access all their learning materials, making sharing as effortless as ever.

MyASUS

One-stop portal of ASUS-developed software tools and services

MyASUS is an exclusive app that helps you easily communicate with customer service, monitor repair status and access product instruction manuals, among other capabilities.





ASUS Control Center

Comprehensive centralized IT management

ASUS Control Center is a centralized IT management suite designed to enhance productivity and security by offering a comprehensive set of controls via a user-friendly interface.



Hardware &
Software
Monitoring



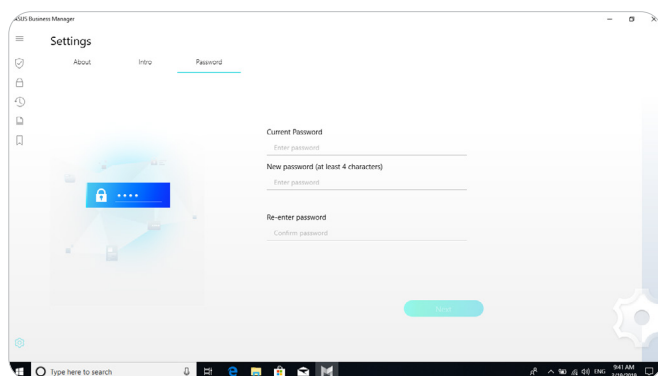
Task
Scheduler



Efficient
energy control



Enhance
security



ASUS Business Manager

Simple PC management

ASUS Business Manager is a PC-based platform consisting of hardware and firmware that provides unique security and productivity capabilities for educators and students.



System
Backtrack



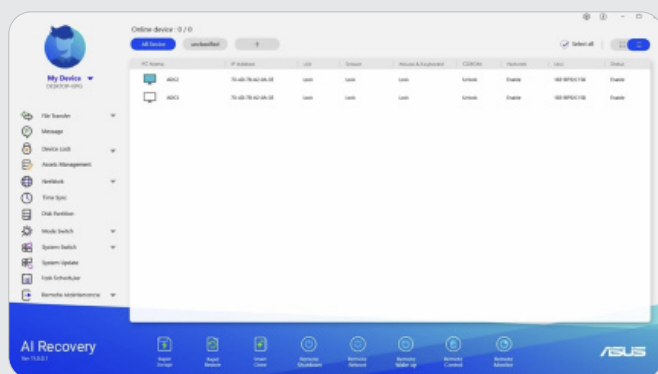
Device
Locked



SECURE
DRIVE



System
Restriction



AI Recovery

Build quality learning spaces

AI Recovery is software that helps IT administrators create e-classrooms and allows for easy deployment, set-up and recovery of all devices.



Smart Cloning



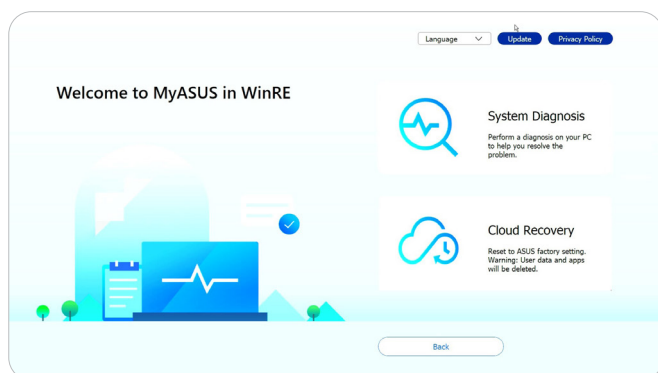
Restore Point



Remote Control



Device Locker



ASUS Cloud Recovery

Fresh start for your PC

ASUS Cloud Recovery simplifies the process of restoring your computer's operating system, requiring just a few easy steps. It automatically installs the latest versions of drivers and software without manual installation.



Faster recovery



Boundless
accessibility



Cost-
effectiveness



Up-to-date
recovery

GOOGLE TEACHING RESOURCE

Elevate education with simple, flexible and secure tools with Google Workspace for Education

To make collaboration easier, streamline instruction and keep your learning environment secure Google Workspace for Education provides flexible, secure, and manageable tools for educators and learners at every age and stage.



Gmail



Calendar



Meet



Docs



Sheets



Slides



Forms



Classroom



Assignments



Sites



Groups



Drive



Admin



Google Classroom



Save time and simplify everyday tasks

- Switch from class to assignment to student in just a few clicks
- Track student progress in your gradebook and export scores to your school's student information system (SIS)
- Keep grading consistent and transparent with rubrics displayed alongside student work

Enhance student learning experiences

- Keep everyone on track with student to-do and teacher to-review pages, and due dates that automatically appear on student calendars when classwork is created
- Upload coursework documents automatically as templates to give each student their own copy of an assignment when it is created

Google Meet



Connect and collaborate with easy-to-use video conferencing

- Join calls from anywhere, on any device — just click and meet with no plugins or downloads needed
- Experience high-quality video and audio across operating systems and devices — even optimized for low bandwidths and dark environments
- Integrates seamlessly with Classroom and other Google Workspace for Education products to make joining and presenting easy

Run classes effectively in a safer learning environment

- Prevent unwanted guests from entering the meeting with safety locks and automatic blocking of anonymous attendees
- Eject people from the meeting and manage requests to join in bulk

Google Assignment

Easily distribute, analyze and mark student work with Assignments for your Learning Management System (LMS)



- Simplify assignment management with user-friendly Google Workspace productivity tools
- Built with the latest Learning Tools Interoperability (LTI) standards for robust security and easy installation in your LMS
- Distribute personalized copies of Google Drive templates and worksheets to students

Examine student work to ensure authenticity

- Compare student work against hundreds of billions of web pages and over 40-million books with originality reports
- Make student-to-student comparisons on your domain-owned repository of past submissions when you sign up for the Teaching and Learning Upgrade or Google Workspace for Education Plus

MICROSOFT TEACHING RESOURCES

Making the transition to remote learning

As schools around the world respond to COVID-19, Microsoft offers remote-learning tools, teaching resources and training that we hope will help schools, educators, students and their families as they navigate their 'new normal'.



Minecraft: Education Edition

Microsoft extends access to Minecraft: Education Edition and resources to support remote learning.



Flipgrid

Flipgrid is social learning for PreK to PhD learners – helping students discuss and showcase what they're learning.



MakeCode

Bring computer science to life for all students with fun projects, immediate results, and both block and text editors for learners at different levels.



Microsoft 365 Education

Empower educators to unlock creativity, promote teamwork, and provide a simple and safe experience in a single, affordable solution built for education.



Outlook



Word



Excel



PowerPoint



OneNote



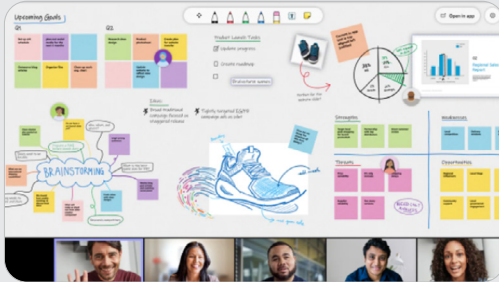
Teams



Publisher

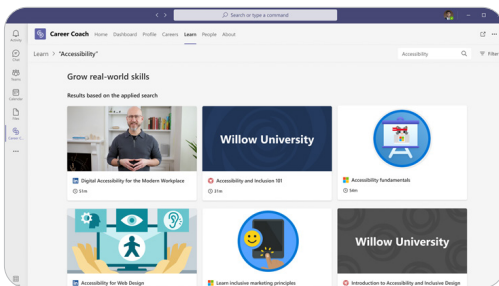


Access



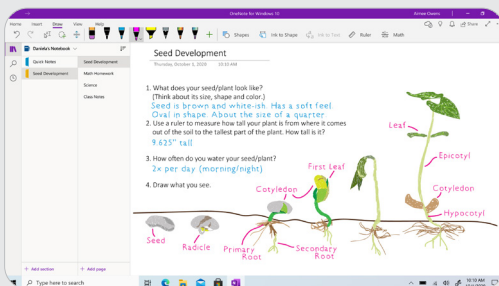
Collaboration and brainstorming with Microsoft Whiteboard

The collaborative digital canvas in Microsoft 365 for effective meetings and engaging learning, facilitating distance learning, run collaborative lessons and maximize learning outcomes with ink, notes, stickers and more.



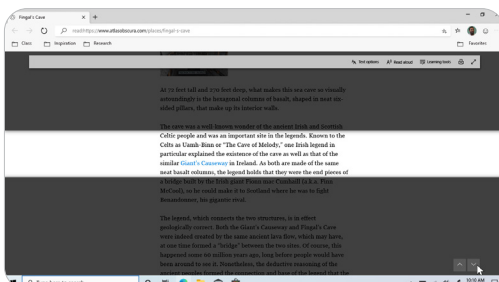
Personalized career guidance with Career Coach

The journey from education to employment isn't always straightforward. Career Coach, a Microsoft Teams app powered by LinkedIn, can help each student discover their unique career path, grow real-world skills, and build their network – all in one place.



Easier classroom organization with OneNote or Education

With a personal workspace for every student, a content library for handouts, and a collaboration space for lessons and creative activities, OneNote for Education empowers students to create their best work.



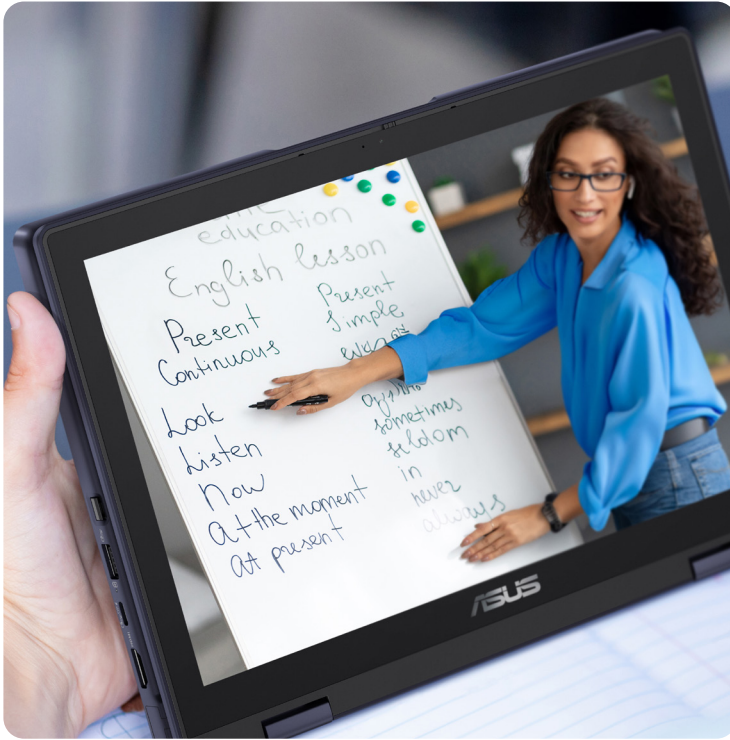
Make online learning easy, safe and fun with Microsoft Edge

Microsoft Edge offers the most comprehensive set of built-in learning and accessibility tools on the web. Built-in learning tools, like Immersive Reader and Read Aloud, let students listen to content such as podcasts or read information line by line, with Focus mode.

PRODUCT



ASUS EDUCATION PRODUCT PORTFOLIO



K-6

For students in this age group, ruggedized laptops, Chromebooks, and 2-in-1 devices are excellent options, offering the flexibility and power to enhance their growing tech skills. These devices support collaboration through chat and video, independent research, and the creation of engaging presentations—anytime, anywhere.



All-round
rubber
bumper



Comfortable
12-inch
display



ASUS
Antimicrobial
Guard

Recommended models

ASUS Chromebook CR Series
ASUS Chromebook CZ Series
ASUS BR Series
ExpertCenter E1 Series



K-12

At this age, teachers employ various methods as students strengthen their mastery of essential skills. Educators blend digital learning with teacher- and student-led activities, allowing children to explore educational apps together. Chromebooks and 2-in-1 devices are ideal for this group, as students are ready for more complex tasks and assignments.



Versatile
360°
design



Military
Grade
Durability



ASUS
Stylus Pen

Recommended models

ASUS Chromebook CX Series
ASUS Chromebook CM Series
ExpertCenter D7 Series
ExpertCenter D5 Series
ExpertCenter E3 Series

Higher Education

By this age, students possess solid tech skills and can choose the right tools for their tasks. They use technology both in and outside the classroom to manage personal and academic responsibilities. The ideal device is lightweight, with flexible connectivity, long battery life, and sufficient processing power for audio, video, and data tasks.



Powerful
CPU



Light-
weight



Long
Battery
Life

Recommended models

ExpertBook B3 Series

ExpertBook B1 Series

ExpertBook P1 Series

ExpertCenter D7 Series

ExpertCenter E5 Series



Esports

Gaming hasn't traditionally been associated with education, but that's changing. With esports embracing competition, content creation, and game design, many students now see it as a viable career path. Forward-thinking schools and universities are creating gaming centers, enabling students to learn, collaborate, and develop team spirit before entering the workforce.



Powerful
CPU



Discrete
Graphics



Excellent
Cooling
Design

Recommended models

ROG GA403

ROG G835

ROG GZ302

ROG GU605

ROG G700

ASUS TUF Gaming T500





IT staffs

An IT-friendly laptop for schools should prioritize easy maintenance, featuring a modular design for quick repairs and captive screws to prevent lost parts. These characteristics help IT staff efficiently manage and maintain devices, minimizing downtime and disruptions to learning. Such laptops are reliable, durable, and cost-effective, making them ideal for educational environments.



Modular
Design



Anti-Falling
Screw



ASUS
Control
Center

Recommended models

ExpertBook B9 Series
ExpertBook B5 Series
ASUS BR Series
ExpertCenter D9 Series



Teachers

Teachers need powerful laptops to prepare teaching materials, grade student assignments, and collaborate with students online for deeper learning. With a virtual learning platform, educators can tailor and personalize the learning experience to individual student needs, fostering a more engaging and effective educational experience.



Light-
weight



Rotatable
Display



ASUS
Business
Manager

Recommended models

ExpertBook B9 Series
ExpertBook B5 Series
ExpertBook P5 Series
ExpertCenter D9 Series

ASUS BR1104CGA/CTA

Ruggedized excellence for limitless learning



Ruggedized
design



Engineered for
easy maintenance



AI noise-canceling
technology



Spacious,
vision-friendly



- Windows 11 Pro - ASUS recommends Windows 11 for Education
- Up to Intel® Processor N250
- MIL-STD 810H US military durability standard¹
- Modular design for easy maintenance
- Comprehensive connectivity
- Scratch-resistant² Corning® Gorilla® Glass³
- Optional touchscreen with stylus
- Sustainable across the product lifecycle



reddot winner 2024



1. The testing regime includes the requirements of both military-grade standards and ASUS quality tests, and varies depending on device. MIL-STD-810H testing is conducted on selected ASUS products only. Note that the MIL-STD-810H testing helps to ensure the quality of ASUS products but does not indicate a particular fitness for military use. The test is performed under laboratory conditions. Any damage caused by attempts to replicate these test conditions would be considered accidental, and would not be covered by the standard ASUS warranty. Additional coverage is available with ASUS Premium Care.

2. Corning® Gorilla® Glass and touchscreen SKU are optional for ASUS BR1104C.

3. ASUS BR1104C keyboard is spill-resistant, not waterproof. Water damage is possible if the product is submerged or exposed to large amounts of water for long periods of time. ASUS standard limited warranty does not cover problems resulting from accidents such as water damage. To prevent water damage resulting from large spills or other accidents, ASUS recommends turning off the notebook, then tilting the laptop to drain away the excess water, wipe off and let it dry for at least 24 hours.

ASUS BR1104FGA/FTA

Ruggedized excellence for limitless learning



Ruggedized
design



World-facing
camera



Garaged
stylus²



360-degree hinge
for flexible learning



- Windows 11 Pro - ASUS recommends Windows 11 for Education
- Up to Intel® Processor N250
- MIL-STD 810H US military durability standard¹
- Modular design for easy maintenance
- Comprehensive connectivity
- Touchscreen with garaged stylus²
- Scratch-resistant³ Corning® Gorilla® Glass⁴
- Sustainable across the product lifecycle



reddot winner 2024



1. The testing regime includes the requirements of both military-grade standards and ASUS quality tests, and varies depending on device. MIL-STD-810H testing is conducted on selected ASUS products only. Note that the MIL-STD-810H testing helps to ensure the quality of ASUS products but does not indicate a particular fitness for military use. The test is performed under laboratory conditions. Any damage caused by attempts to replicate these test conditions would be considered accidental, and would not be covered by the standard ASUS warranty. Additional coverage is available with ASUS Premium Care.

2. Garaged stylus is an optional feature.

3. ASUS BR1104C keyboard is spill-resistant, not waterproof. Water damage is possible if the product is submerged or exposed to large amounts of water for long periods of time. ASUS standard limited warranty does not cover problems resulting from accidents such as water damage. To prevent water damage resulting from large spills or other accidents, ASUS recommends turning off the notebook, then tilting the laptop to drain away the excess water, wipe off and let it dry for at least 24 hours.

4. Corning® Gorilla® Glass and touchscreen SKU are optional for ASUS BR1104F.

ASUS BR1204CGA/CTA

Ruggedized excellence for limitless learning



Ruggedized
design



Engineered for
easy maintenance



AI noise-canceling
technology



Spacious,
vision-friendly



- Windows 11 Pro - ASUS recommends Windows 11 for Education
- Up to Intel® Processor N250
- Marvelous 12.2" rugged laptop with 16:10 display for superb visual experiences
- MIL-STD 810H US military durability standard¹
- Modular design for easy maintenance
- Comprehensive connectivity
- Scratch-resistant² Corning® Gorilla® Glass³
- Optional touchscreen with stylus
- Sustainable across the product lifecycle



reddot winner 2024



1. The testing regime includes the requirements of both military-grade standards and ASUS quality tests, and varies depending on device. MIL-STD-810H testing is conducted on selected ASUS products only. Note that the MIL-STD-810H testing helps to ensure the quality of ASUS products but does not indicate a particular fitness for military use. The test is performed under laboratory conditions. Any damage caused by attempts to replicate these test conditions would be considered accidental, and would not be covered by the standard ASUS warranty. Additional coverage is available with ASUS Premium Care.

2. ASUS BR1204C keyboard is spill-resistant, not waterproof. Water damage is possible if the product is submerged or exposed to large amounts of waters for long periods of time. ASUS standard limited warranty does not cover problems resulting from accidents such as water damage. To prevent water damage resulting from large spills or other accidents, ASUS recommends turning off the notebook, then tilting the laptop to drain away the excess water, wipe off and let it dry for at least 24 hours.

3. Corning® Gorilla® Glass and touchscreen SKU are optional for ASUS BR1204C.



ASUS BR1204FGA/FTA

Ruggedized excellence for limitless learning

ASUS BR1204F stands out as an excellent tool for limitless learning in K-12 education, boasting a durable fingerprint-resistant finish and robust modular design that incorporates replaceable internal components, thereby extending its product lifespan. Smartly crafted to withstand accidental drops, ASUS BR1204F undergoes rigorous testing, meeting US military-grade standards¹ and exacting in-house ASUS assessments to ensure unwavering durability — making it the perfect choice for modern education.



Ruggedized design



World-facing camera



Garaged stylus²



360-degree hinge for flexible learning



- Windows 11 Pro - ASUS recommends Windows 11 for Education
- Up to Intel® Processor N250
- Marvelous 12.2" rugged laptop with 16:10 display for superb visual experiences
- MIL-STD 810H US military durability standard¹
- Modular design for easy maintenance
- Comprehensive connectivity
- Touchscreen with garaged stylus²
- Scratch-resistant³ Corning® Gorilla® Glass⁴
- Sustainable across the product lifecycle



reddot winner 2024



1. The testing regime includes the requirements of both military-grade standards and ASUS quality tests, and varies depending on device. MIL-STD-810H testing is conducted on selected ASUS products only. Note that the MIL-STD-810H testing helps to ensure the quality of ASUS products but does not indicate a particular fitness for military use. The test is performed under laboratory conditions. Any damage caused by attempts to replicate these test conditions would be considered accidental, and would not be covered by the standard ASUS warranty. Additional coverage is available with ASUS Premium Care.

2. Stylus is optional feature.

3. ASUS BR1204F keyboard is spill-resistant, not waterproof. Water damage is possible if the product is submerged or exposed to large amounts of water for long periods of time. ASUS standard limited warranty does not cover problems resulting from accidents such as water damage. To prevent water damage resulting from large spills or other accidents, ASUS recommends turning off the notebook, then tilting the laptop to drain away the excess water, wipe off and let it dry for at least 24 hours.

4. Corning® Gorilla® Glass and touchscreen SKU are optional for ASUS BR1204F.

ASUS BR1402C

Your dependable everyday ally



Ruggedized
design



MIL-STD-810H
military-grade
durability¹



Technician-friendly
modular design



Expandable
storage



- Up to 10 hours battery life²
- Up to 1TB PCIe® 3.0 SSD³ with quick upgrade RAM door
- Anti-glare FHD display with TÜV Rheinland-certified
- ASUS Antimicrobial Guard protection
- US MIL-STD 810H military-grade durability¹
- Technician-friendly modular design

1. The testing regime includes the requirements of both military-grade standards and ASUS quality tests, and varies depending on device. MIL-STD-810 testing is conducted on selected ASUS products only. Note that the MIL-STD-810 testing helps to ensure the quality of ASUS products but does not indicate a particular fitness for military use. The test is performed under laboratory conditions. Any damage caused by attempts to replicate these test conditions would be considered accidental, and would not be covered by the standard ASUS warranty. Additional coverage is available with ASUS Premium Care.

2. Battery tests conducted by ASUS on March 20, 2023 based on Mobile Mark 2018. Test configuration: Intel® Processor N200, 256GB UFS 2.1, 8GB DDR4 SO-DIMM, FHD value IPS display. Test settings: WiFi enabled, WiFi LED indicator off. Actual battery life may vary depending on product configuration, usage, operational conditions and power management settings. Battery life will decrease over the lifetime of the battery.

3. BR1402 series offers up to 512GB M.2 PCIe SSD storage. 1TB SSD is only available as a user-upgraded configuration.



ASUS BR1402F

Your dependable everyday ally



Ruggedized
design



Flexible 360°
hinge



MPP 2.0 garaged
stylus (optional)



Technician-friendly
modular design



- Up to 10 hours battery life¹
- 360°-flippable hinge with optional MPP 2.0 garaged stylus
- Touchscreen FHD display
- Scratch-resistant Corning® Gorilla® Glass with TÜV Rheinland-certified
- US MIL-STD 810H military-grade durability²
- Technician-friendly modular design

1. Battery tests conducted by ASUS on March 20, 2023 based on Mobile Mark 2018. Test configuration: Intel® Processor N200, 256GB UFS 2.1, 8GB DDR4 SO-DIMM, FHD value IPS display. Test settings: WiFi enabled, WiFi LED indicator off. Actual battery life may vary depending on product configuration, usage, operational conditions and power management settings. Battery life will decrease over the lifetime of the battery.

2. The testing regime includes the requirements of both military-grade standards and ASUS quality tests, and varies depending on device. MIL-STD-810 testing is conducted on selected ASUS products only. Note that the MIL-STD-810 testing helps to ensure the quality of ASUS products but does not indicate a particular fitness for military use. The test is performed under laboratory conditions. Any damage caused by attempts to replicate these test conditions would be considered accidental, and would not be covered by the standard ASUS warranty. Additional coverage is available with ASUS Premium Care.



ASUS ExpertBook B1 (B1403)

Elevated, effortless and secure



AI-enhanced
productivity



Up to Intel® Core™ 7
processor



Portable for
practicality



Full I/O ports



- Powered by up to Intel® Core™ 7 processor with Intel® Iris® X^e Graphics
- ASUS AI ExpertMeet¹ and AI noise-canceling technology for productivity
- Robust security features including, a physical webcam shield, a fingerprint sensor² and McAfee Smart AI™ threat detection³
- 1.4 Kg⁴ lightweight design with up to 63 Wh battery⁵
- Brand-new design with optimized thermal performance, zero-screw quick battery disassembly design, ensuring effortless battery replacement
- MIL-STD 810H US military standard certified for exceptional durability⁶



1. For the full AI feature experience, 12 GB of memory is required.
2. Fingerprint sensor is an optional feature.
3. McAfee Smart AI threat detection is an optional feature.
4. Exact weight varies by model and specification.
5. Battery options vary by SKU.
6. The testing regime includes the requirements of both military-grade standards and ASUS quality tests, and varies depending on device. MIL-STD-810H testing is conducted on selected ASUS products only. Note that the MIL-STD-810H testing helps to ensure the quality of ASUS products but does not indicate a particular fitness for military use. The test is performed under laboratory conditions. Any damage caused by attempts to replicate these test conditions would be considered accidental, and would not be covered by the standard ASUS warranty. Additional coverage is available with ASUS Premium Care.



ASUS ExpertBook B1 (B1503)

Elevated, effortless and secure



AI-enhanced
productivity



Up to Intel® Core™ 7
processor



Portable for
practicality



Full I/O ports



- Powered by up to Intel® Core™ 7 processor with Intel® Iris® X^e Graphics
- ASUS AI ExpertMeet¹ and AI noise-canceling technology for productivity
- Robust security features including, a physical webcam shield, a fingerprint sensor² and McAfee Smart AI™ threat detection³
- 1.6 Kg⁴ lightweight design with up to 63 Wh battery⁵
- Brand-new design with optimized thermal performance, zero-screw quick battery disassembly design, ensuring effortless battery replacement
- MIL-STD 810H US military standard certified for exceptional durability⁶



1. For the full AI feature experience, 12 GB of memory is required.
2. Fingerprint sensor is an optional feature.
3. McAfee Smart AI threat detection is an optional feature.
4. Exact weight varies by model and specification.
5. Battery options vary by SKU.
6. The testing regime includes the requirements of both military-grade standards and ASUS quality tests, and varies depending on device. MIL-STD-810H testing is conducted on selected ASUS products only. Note that the MIL-STD-810H testing helps to ensure the quality of ASUS products but does not indicate a particular fitness for military use. The test is performed under laboratory conditions. Any damage caused by attempts to replicate these test conditions would be considered accidental, and would not be covered by the standard ASUS warranty. Additional coverage is available with ASUS Premium Care.





ASUS ExpertBook B3 Flip (B3402F)

Maximum flexibility anytime, anywhere

ASUS ExpertBook B3 Flip is designed for hybrid learning with a durable and versatile build. Its 360° hinge, world-facing camera¹, and garaged stylus² provide maximum productivity. B3 Flip is packed with protective features, including ASUS Antibacterial Guard³ and a TÜV Rheinland-certified display. It also supports WiFi 6E and 4G LTE⁴ for fast, portable connectivity, and features two-way AI noise-canceling technology and noise-reducing cameras for an exceptional remote learning and conferencing experience.



All-round
versatility



Two-way AI
noise-canceling
technology



Speedy mobile
connectivity



Everyday health
protection



- Up to Intel® Core™ 7 processor (Series 1)
- 360°-flippable design with MPP 2.0 garaged stylus²
- ASUS Antibacterial Guard protection³
- Two-way AI noise-canceling technology with instant mic-mute key
- Enterprise-grade security with fingerprint-reader power button
- TÜV Rheinland certified eyes protection display



1. The world-facing camera is optional.

2. The garaged stylus is optional.

3. The antibacterial treatment is registered by the US EPA and authorized under EU BPR.

4. 4G LTE is optional. MicroSD card reader + nano SIM combo is only for LTE SKU.

ASUS ExpertBook B3 (B3405)

AI PC, configured for you



AI enhanced
productivity



Intel® Core™ Ultra
processors (Series 2)
with Intel vPro®



Portable for
practicality



ASUS
ExpertGuardian



- Powered by up to the latest Intel® Core™ Ultra 7 processor with Intel vPro® and Intel® Arc graphics
- Intel AI Boost NPU and ASUS AI ExpertMeet¹ to supercharge productivity
- ASUS ExpertGuardian with enterprise-grade NIST Cybersecurity Framework
- Dual SO-DIMM up to 64 GB DDR5 RAM
- 1.42 kg² lightweight design, 14" display with up to 63 Wh battery³
- Brand-new design with optimized thermal performance, zero-screw quick battery servicing design, ensuring effortless battery replacement



1. For the full AI feature experience, 12 GB of memory is required.
2. Exact weight varies by model and specification.
3. Battery options vary by SKU.

ASUS ExpertBook B3 (B3605)

AI PC, configured for you



AI enhanced
productivity



Intel® Core™ Ultra
processors (Series 2)
with Intel vPro®



Portable for
practicality



ASUS
ExpertGuardian



- Powered by up to the latest Intel® Core™ Ultra 7 processor with Intel vPro® and Intel® Arc graphics
- Intel AI Boost NPU and ASUS AI ExpertMeet¹ to supercharge productivity
- ASUS ExpertGuardian with enterprise-grade NIST Cybersecurity Framework
- Dual SO-DIMM up to 64 GB DDR5 RAM
- 1.78kg² lightweight design, 16" display with up to 63 Wh battery³
- Brand-new design with optimized thermal performance, zero-screw quick battery servicing design, ensuring effortless battery replacement



1. For the full AI feature experience, 12 GB of memory is required.
2. Exact weight varies by model and specification.
3. Battery options vary by SKU.

ASUS ExpertBook B3 (B3404)

Configured to advance education with AI

Next-level
performanceComprehensive
connectivityEnterprise-
grade securityMilitary-grade
durability¹

- Up to Intel® Core™ Ultra 7 processor² with Intel vPro® with dedicated AI engine (NPU) and Dedicated Copilot key
- Comprehensive connectivity, and smart card reader³
- 16:10 display, with optional touchscreen functionality
- Robust security features, including biometric login and TPM³ technology
- Certified to US MIL-STD 810H¹ standard for exceptional durability
- Dual SO-DIMM up to 32GB DDR5 RAM



1. The testing regime includes the requirements of both military-grade standards and ASUS quality tests, and varies depending on device. MIL-STD-810H testing is conducted on selected ASUS products only. Note that the MIL-STD-810H testing helps to ensure the quality of ASUS products but does not indicate a particular fitness for military use. The test is performed under laboratory conditions. Any damage caused by attempts to replicate these test conditions would be considered accidental, and would not be covered by the standard ASUS warranty. Additional coverage is available with ASUS Premium Care.

2. Intel® Core™ Ultra processors are available on selected models only. Availability varies by country and region.

3. Optional feature. May vary by model, specification or region.

ASUS ExpertBook B3 (B3604)

Configured to advance education with AI

Next-level
performanceComprehensive
connectivityEnterprise-
grade securityMilitary-grade
durability¹

- Windows 11 Pro - ASUS recommends Windows 11 Pro for business
- Up to Intel® Core™ Ultra 7 processor² with Intel vPro® with dedicated AI engine (NPU) and Dedicated Copilot key
- Comprehensive connectivity, and smart card reader³
- 16:10 display, with optional touchscreen functionality
- Robust security features, including biometric login and TPM³ technology
- Certified to US MIL-STD 810H¹ standard for exceptional durability
- Dual SO-DIMM up to 32GB DDR5 RAM



1. The testing regime includes the requirements of both military-grade standards and ASUS quality tests, and varies depending on device. MIL-STD-810H testing is conducted on selected ASUS products only. Note that the MIL-STD-810H testing helps to ensure the quality of ASUS products but does not indicate a particular fitness for military use. The test is performed under laboratory conditions. Any damage caused by attempts to replicate these test conditions would be considered accidental, and would not be covered by the standard ASUS warranty. Additional coverage is available with ASUS Premium Care.

2. Intel® Core™ Ultra processors are available on selected models only. Availability varies by country and region.

3. Optional feature. May vary by model, specification or region.

ASUS ExpertBook B5 (B5404)

Business excellence with AI

All-metal luxury
and lightnessAI power,
built right inMilitary-grade
durabilityEnterprise-
grade security

- Up to Intel vPro® with Intel® Core™ Ultra 7 processor
- Dedicated Copilot key for more AI exploration
- Up to NVIDIA® GeForce RTX 2050 discrete graphics
- Ultrafast 4G¹ and WiFi 7² support
- Starting from 1.29 kg light
- Dual SO-DIMM up to 64GB DDR



reddot winner 2024

1. 4G network support is an optional feature on selected models and is based on the configuration at the time of purchase. Network service needs to be purchased separately through local service providers. 4G speeds vary and require optimal network and connection quality (factors include frequency, bandwidth and congestion); contact your network operator for information on availability.

2. WiFi 7 network card is available on selected models.



ASUS ExpertBook B5 (B5604)

Business excellence with AI

AI power,
built right inUnparalleled
performanceMilitary-grade
durabilityEnterprise-
grade security

- Up to Intel vPro® with Intel® Core™ Ultra 7 processor
- Dedicated Copilot key for more AI exploration
- Up to NVIDIA® GeForce RTX 2050 discrete graphics
- Ultrafast 4G¹ and WiFi 7² support
- Dual SO-DIMM up to 64GB DDR
- Enterprise-grade security features



reddot winner 2024

1. 4G network support is an optional feature on selected models and is based on the configuration at the time of purchase. Network service needs to be purchased separately through local service providers. 4G speeds vary and require optimal network and connection quality (factors include frequency, bandwidth and congestion); contact your network operator for information on availability.

2. WiFi 7 network card is available on selected models.



ASUS ExpertBook B9 OLED (B9403)

The epitome of sustainable excellence



Ultralight
magnesium-lithium



Sustainable
technology



Modern work
experiences



Performance
and security



- The world's lightest 14" OLED business laptop, weighing a mere 990g¹
- Up to Intel® Core™ 7 processor (Series 1)
- Dedicated Copilot key for more AI exploration
- Sustainable across the product lifecycle
- All-metal premium magnesium-lithium alloy chassis
- MIL-STD 810H US military-grade durability



1. As of November 17, 2023, based on internal ASUS market analysis comparing the size and weight of the highlighted ASUS laptop to competitor products from vendors including LG, HP, Dell and Lenovo. Actual weight may vary by specifications.

ASUS ExpertBook P1 (PM1403)

Elevate your efficiency, anywhere



Up to AMD®
Ryzen™ 7 processor



AI-enhanced
productivity



Business-grade
security



Military-grade
durability



- Windows 11 Pro – ASUS recommends Windows 11 Pro for business
- Up to AMD Ryzen™ 7 processor
- Lightweight design, starting at 1.4kg¹
- Up to 64GB² of DDR5 memory
- Up to 1TB dual SSDs storage
- Business-grade security with ASUS ExpertGuardian



1. Weight may vary according to configuration.
2. Memory may vary according to configuration. It's upgradable up to 64GB.

ASUS ExpertBook P1 (PM1503)

Elevate your efficiency, anywhere



Up to AMD®
Ryzen™ 7 processor



AI-enhanced
productivity



Business-grade
security



Military-grade
durability



- Windows 11 Pro – ASUS recommends Windows 11 Pro for business
- Up to AMD Ryzen™ 7 processor
- Lightweight design, starting at 1.6kg¹
- Up to 64GB² of DDR5 memory
- Up to 1TB dual SSDs storage
- Business-grade security with ASUS ExpertGuardian



1. Weight may vary according to configuration.
2. Memory may vary according to configuration. It's upgradable up to 64GB.

ASUS ExpertBook P1 (P1403)

Elevate your efficiency, anywhere



Lightweight



ASUS AI
ExpertMeet



Windows
Secured-core PC



Military-grade
durability



- Up to Intel® Core™ i7 processor
- Lightweight starting at 1.4kg¹
- ASUS exclusive AI ExpertMeet² to supercharge meeting productivity and efficiency
- Up to 1TB dual SSDs storage
- Business-grade BIOS security compliant with NIST SP 800-155 resilience requirements
- ExpertCool thermal to maintain performance even in clamshell mode



1. Weight may vary according to configuration.
2. For the full AI feature experience, 12 GB of memory is required.

ASUS ExpertBook P1 (P1503)

Elevate your efficiency, anywhere



Lightweight



ASUS AI
ExpertMeet



Windows
Secured-core PC



Military-grade
durability



- Up to Intel® Core™ i7 processor
- Lightweight starting at 1.6kg¹
- ASUS exclusive AI ExpertMeet² to supercharge meeting productivity and efficiency
- Up to 1TB dual SSDs storage
- Business-grade BIOS security compliant with NIST SP 800-155 resilience requirements
- ExpertCool thermal to maintain performance even in clamshell mode



1. Weight may vary according to configuration.
2. For the full AI feature experience, 12 GB of memory is required.

ASUS ExpertBook P3 (P3405)

Productivity, leveled up



Up to Intel® Core™
i7 processor



AI-enhanced
productivity



Enterprise-
grade security



Military-grade
durability



- Windows 11 Pro – ASUS recommends Windows 11 Pro for business
- Up to Up to Intel® Core™ i7 processor
- Lightweight design, starting at 1.36kg¹
- Up to 64GB² of DDR5 memory
- Up to 3TB dual SSDs storage
- 14-inch 2.5k 16:10 anti-glare display
- Safeguard your confidential data with the ASUS ExpertGuardian



1. Weight may vary according to configuration.
2. Memory may vary according to configuration. It's upgradable up to 64GB.

ASUS ExpertBook P3 (P3605)

Productivity, leveled up



AI-enhanced
productivity



Comprehensive
connectivity



Enterprise-
grade security



Military-grade
durability



- Windows 11 Pro – ASUS recommends Windows 11 Pro for business
- Up to Up to Intel® Core™ i7 processor
- Lightweight design, starting at 1.75kg¹
- Up to 64GB² of DDR5 memory
- Up to 3TB dual SSDs storage
- 16-inch 2.5k 16:10 anti-glare display
- Safeguard your confidential data with the ASUS ExpertGuardian



1. Weight may vary according to configuration.
2. Memory may vary according to configuration. It's upgradable up to 64GB.

ASUS ExpertBook P5 (P5405)

Work reimaged, with AI



AI power,
built right in



1.27kg
lightweight



Enterprise-
grade security



Military-grade
durability



- Powered by Intel® Core™ Ultra processors (Series 2) with up to 47 NPU TOPS
- 14" 2.5K 144 Hz anti-glare display
- 1.27kg lightweight all metal design
- ASUS AI ExpertMeet to supercharge productivity
- ASUS Expert with business-grade NIST Cybersecurity Framework



**GOOD DESIGN
AWARD 2024**



ASUS ExpertCenter E5 AiO (E5702/E5402)

Smart, secure, set for business

A no-compromise solution for forward-thinking businesses, ASUS ExpertCenter E5 AiO features the latest Intel® Core™ 14th Generation processors, high-speed connectivity, two-way ASUS AI noise canceling technology, upgradeable storage, VESA mount compatibility, and enterprise-grade security features.



14th Gen Intel®
processor



Dolby Atmos



Kensington®
Lock



VESA Mount
compatible



- Up to Intel® Core™ 7 14th Gen processor
- Up to ultrafast Intel® WiFi 6E*
- Clear and powerful online meetings with AI Camera and AI Noise-Canceling technology
- ASUS AdaptiveLock* to secure data in public areas
- VESA Mount compatible
- Dolby Atmos enhanced audio



* WiFi 6 is backwards-compatible with legacy 802.11 specs. Actual performance of WiFi 6 may vary in real-world situations.

ASUS ExpertCenter E3 AiO (E3202WVA/ E3402WVA)

Beautiful by design. Imagination truly expanded.



Up to 13th Gen
CPU



WiFi 6E



Kensington
lock security



AI noise canceling
technology



- Up to Intel® Core™ i7 & Intel® Core™ 7 processors for fast computing
- WIFI 6E high speed gives users productive performance (Optional)
- Clear and powerful online meetings with AI Camera and AI Noise-Canceling technology
- Physical Camera shutter to protect users' privacy
- TPM 2.0 chip for security capabilities (Optional)
- Dolby Atmos support to enhance listening experience

- Trusted Platform Module (TPM) is optional.



ASUS ExpertCenter E1 AiO (E1600)

Unwavering versatility. Always ready.



Integrated
UPS



Convenient
connectivity



15.6" touch
display



Fanless
design



- Windows 11 Pro for business
- Unique integrated UPS design to protect your data from unstable power currents
- Fanless design for a quiet operation
- Compact productivity with expansive 15.6" multi-touch screen
- Standard VESA mount compatible
- Convenient IO selections for versatile business applications

- The uninterruptible power supply (UPS) is an optional feature. Availability varies by country and region.
- VESA mount compatible. Wall-mount screws are optional accessories.





ASUS ExpertCenter D5 Mini Tower (D501MER)

Outstanding Value for business at any sizes

Engineered for the specific demands of small businesses, the ASUS ExpertCenter D5 Mini Tower boasts powerful, trustworthy, and expandable performance. Its modern, compact, and flexible design caters to diverse workspaces and usage scenarios. Take advantage of our simplified small-business support services to experience reduced downtime and a more economical total cost of ownership.



**Secure
manageability**



**Efficient
expandability**



**Tool-free
chassis**



**Ultimate
reliability**



- Up to Intel® Core™ 14th gen processor
- Enterprise ready security with TPM 2.0 supports and more
- Built with industry-leading ASUS motherboards and tested to stringent ASUS and MIL-STD 810H US military standards
- Up to 64 GB DDR5 RAM and up to 4 TB storage
- Up to three displays simultaneously
- Supercharge your productivity with dedicated Copilot key



- The testing regime includes the requirements of both military-grade standards and ASUS quality tests and varies depending on device. MIL-STD-810H testing is conducted on selected ASUS products only. Note that the MIL-STD-810H testing helps to ensure the quality of ASUS products but does not indicate a particular fitness for military use. The test is performed under laboratory conditions. Any damage caused by attempts to replicate these test conditions would be considered accidental, and would not be covered by the standard ASUS warranty. Additional coverage is available with ASUS Premium Care.

- Trusted Platform Module (TPM) is optional.

- Please note that ExpertCenter D5 Mini Tower includes up to 2 x 1 TB M.2 SSD, and up to 1 x 2 TB 3.5" HDD, for total storage capacity of up to 4 TB.

a) Screen simulated, subject to change. Feature availability and rollout timing varies by market and device.

b) Copilot in Windows (in preview) is rolling out gradually within the latest update to Windows 11 in select global markets. Timing of availability varies by device and market. Learn more: <https://www.microsoft.com/en-us/windows/copilot-ai-features?r=1#faq>

c) Copilot with commercial data protection requires Microsoft 365 E3, E5, Business Standard, Business Premium or A3 or A5 for faculty, or accessed using Microsoft Entra ID.

- Terms and conditions apply. For more details, please read the full terms and published on <https://www.asus.com/content/asus-offers-adobe-creative-cloud/>.

ASUS ExpertCenter D5 SFF (D501SER)

Outstanding Value for business at any sizes



Secure
manageability



Efficient
expandability



Tool-free
chassis



Ultimate
reliability



- Up to Intel® Core™ 14th gen processor
- Enterprise ready security with TPM 2.0 supports and more
- Built with industry-leading ASUS motherboards and tested to stringent ASUS and MIL-STD 810H US military standards
- Up to 64 GB DDR5 RAM and up to 4 GB storage
- Up to three displays simultaneously
- Supercharge your productivity with dedicated Copilot key



- The testing regime includes the requirements of both military-grade standards and ASUS quality tests and varies depending on device. MIL-STD-810H testing is conducted on selected ASUS products only. Note that the MIL-STD-810H testing helps to ensure the quality of ASUS products but does not indicate a particular fitness for military use. The test is performed under laboratory conditions. Any damage caused by attempts to replicate these test conditions would be considered accidental, and would not be covered by the standard ASUS warranty. Additional coverage is available with ASUS Premium Care.

- Trusted Platform Module (TPM) is optional.

- Please note that ExpertCenter D5 SFF includes up to 2 x 1 TB M.2 SSD, and up to 1 x 2 TB 3.5" HDD, for total storage capacity of up to 4 TB.

a) Screen simulated, subject to change. Feature availability and rollout timing varies by market and device. b) Copilot in Windows (in preview) is rolling out gradually within the latest update to Windows 11 in select global markets. Timing of availability varies by device and market. Learn more: <https://www.microsoft.com/en-us/windows/copilot-ai-features?r=1#faq> c) Copilot with commercial data protection requires Microsoft 365 E3, E5, Business Standard, Business Premium or A3 or A5 for faculty, or accessed using Microsoft Entra ID.

- Terms and conditions apply. For more details, please read the full terms and published on <https://www.asus.com/content/asus-offers-adobe-creative-cloud/>.

ASUS ExpertCenter D5 Tower (D500TER)

Exceptional small-business value



Secure
manageability



Efficient
expandability



Tool-free
chassis



Ultimate
reliability



- Up to Intel® Core™ 14th gen processor
- Enterprise ready security with TPM 2.0 supports and more
- Built with industry-leading ASUS motherboards and tested to stringent ASUS and MIL-STD 810H US military standards
- Up to 64 GB DDR5 RAM and up to 6 GB storage
- Up to three displays simultaneously
- Supercharge your productivity with dedicated Copilot key



- The testing regime includes the requirements of both military-grade standards and ASUS quality tests and varies depending on device. MIL-STD-810H testing is conducted on selected ASUS products only. Note that the MIL-STD-810H testing helps to ensure the quality of ASUS products but does not indicate a particular fitness for military use. The test is performed under laboratory conditions. Any damage caused by attempts to replicate these test conditions would be considered accidental, and would not be covered by the standard ASUS warranty. Additional coverage is available with ASUS Premium Care.

- Trusted Platform Module (TPM) is optional.

a) Screen simulated, subject to change. Feature availability and rollout timing varies by market and device. b) Copilot in Windows (in preview) is rolling out gradually within the latest update to Windows 11 in select global markets. Timing of availability varies by device and market. Learn more: <https://www.microsoft.com/en-us/windows/copilot-ai-features?r=1#faq> c) Copilot with commercial data protection requires Microsoft 365 E3, E5, Business Standard, Business Premium or A3 or A5 for faculty, or accessed using Microsoft Entra ID.

- Terms and conditions apply. For more details, please read the full terms and published on <https://www.asus.com/content/asus-offers-adobe-creative-cloud/>.

ASUS ExpertCenter D7 SFF (D701SER)

Powerful, expandable and always reliable



Secure
manageability



Efficient
expandability



Tool-free
chassis



Ultimate
reliability



- Up to Intel® Core™ 14th gen processor
- Redesigned tool-free chassis makes it easier to maintain and manage
- Built with industry-leading ASUS motherboards and tested to stringent ASUS and MIL-STD 810H US military standards
- Up to 128 GB DDR5 RAM and up to 4 GB storage
- Up to four displays simultaneously
- Supercharge your productivity with dedicated Copilot key



- Intel vPro® Enterprise and Essential are optional and their availability varies according to country. Please check with your local ASUS retailer for details.
 - The testing regime includes the requirements of both military-grade standards and ASUS quality tests and varies depending on device. MIL-STD-810H testing is conducted on selected ASUS products only. Note that the MIL-STD-810H testing helps to ensure the quality of ASUS products but does not indicate a particular fitness for military use. The test is performed under laboratory conditions. Any damage caused by attempts to replicate these test conditions would be considered accidental, and would not be covered by the standard ASUS warranty. Additional coverage is available with ASUS Premium Care.
 - Please note that ExpertCenter D7 SFF includes up to 2 x 1 TB M.2 SSD drives and up to 1 x 2 TB 3.5" HDD, for total storage capacity of up to 4 TB.
 a) Screen simulated, subject to change. Feature availability and rollout timing varies by market and device. b) Copilot in Windows (in preview) is rolling out gradually within the latest update to Windows 11 in select global markets. Timing of availability varies by device and market. Learn more: <https://www.microsoft.com/en-us/windows/copilot-ai-features?r=1#faq> c) Copilot with commercial data protection requires Microsoft 365 E3, E5, Business Standard, Business Premium or A3 or A5 for faculty, or accessed using Microsoft Entra ID.
 - Terms and conditions apply. For more details, please read the full terms and published on <https://www.asus.com/content/asus-offers-adobe-creative-cloud/>.



ASUS ExpertCenter D7 Mini Tower (D701MER)

Powerful, expandable, and always reliable



Secure
manageability



Efficient
expandability



Tool-free
chassis



Ultimate
reliability



- Up to Intel® Core™ 14th gen processor
- Redesigned tool-free chassis makes it easier to maintain and manage
- Built with industry-leading ASUS motherboards and tested to stringent ASUS and MIL-STD 810H US military standards
- Up to 128 GB DDR5 RAM and up to 6 GB storage
- Up to four displays simultaneously
- Supercharge your productivity with dedicated Copilot key



- Intel vPro® Enterprise and Essential are optional and their availability varies according to country. Please check with your local ASUS retailer for details.
 - The testing regime includes the requirements of both military-grade standards and ASUS quality tests and varies depending on device. MIL-STD-810H testing is conducted on selected ASUS products only. Note that the MIL-STD-810H testing helps to ensure the quality of ASUS products but does not indicate a particular fitness for military use. The test is performed under laboratory conditions. Any damage caused by attempts to replicate these test conditions would be considered accidental, and would not be covered by the standard ASUS warranty. Additional coverage is available with ASUS Premium Care.
 - Please note that ExpertCenter D7 Mini Tower includes up to 2 x 1 TB M.2 SSD, and up to 2 x 2 TB 3.5" HDD, for total storage capacity of up to 6 TB.
 a) Screen simulated, subject to change. Feature availability and rollout timing varies by market and device. b) Copilot in Windows (in preview) is rolling out gradually within the latest update to Windows 11 in select global markets. Timing of availability varies by device and market. Learn more: <https://www.microsoft.com/en-us/windows/copilot-ai-features?r=1#faq> c) Copilot with commercial data protection requires Microsoft 365 E3, E5, Business Standard, Business Premium or A3 or A5 for faculty, or accessed using Microsoft Entra ID.
 - Terms and conditions apply. For more details, please read the full terms and published on <https://www.asus.com/content/asus-offers-adobe-creative-cloud/>.



ASUS ExpertCenter D7 Tower (D700TER)

Secure, reliable, and business-ready



**Secure
manageability**



**Efficient
expandability**



**Tool-free
chassis**



**Ultimate
reliability**



- Up to Intel® Core™ 14th gen processor
- Enterprise ready security with TPM 2.0 supports and more
- Built with industry-leading ASUS motherboards and tested to stringent ASUS and MIL-STD 810H US military standards
- Up to 128 GB DDR5 RAM and up to 6 GB storage
- Up to four displays simultaneously
- Supercharge your productivity with dedicated Copilot key



- The testing regime includes the requirements of both military-grade standards and ASUS quality tests and varies depending on device. MIL-STD-810H testing is conducted on selected ASUS products only. Note that the MIL-STD-810H testing helps to ensure the quality of ASUS products but does not indicate a particular fitness for military use. The test is performed under laboratory conditions. Any damage caused by attempts to replicate these test conditions would be considered accidental, and would not be covered by the standard ASUS warranty. Additional coverage is available with ASUS Premium Care.

- Trusted Platform Module (TPM) is optional.

a) Screen simulated, subject to change. Feature availability and rollout timing varies by market and device. b) Copilot in Windows (in preview) is rolling out gradually within the latest update to Windows 11 in select global markets. Timing of availability varies by device and market. Learn more: <https://www.microsoft.com/en-us/windows/copilot-ai-features?i=1#faq> c) Copilot with commercial data protection requires Microsoft 365 E3, E5, Business Standard, Business Premium or A3 or A5 for faculty, or accessed using Microsoft Entra ID.

- Terms and conditions apply. For more details, please read the full terms and published on <https://www.asus.com/content/asus-offers-adobe-creative-cloud/>.

ASUS ExpertCenter B900 SFF (B900SF)

Enterprise-grade security and scalable manageability



**Secure
manageability**



**Compact
capability**



**Tool-free
chassis**



**Ultimate
reliability**



- Windows 11 Pro for business
- Up to Intel vPro® with Intel® Core™ Ultra 9 processor
- Up to professional NVIDIA® graphics
- Up to 128 GB DDR5 memory
- Up to 2 TB HDD + 4 TB SSD storage
- Durability-tested with MIL-STD 810H military standard and ASUS in-house testing



1. Intel vPro® availability varies according to country. Please check with your local ASUS retailer for details.

2. Intel® Core™ Ultra processors and NVIDIA discrete graphics are available on selected models only. Availability varies by country and region.

3. The testing regime includes the requirements of both military-grade standards and ASUS quality tests and varies depending on device. MIL-STD-810H testing is conducted on selected ASUS products only. Note that the MIL-STD-810H testing helps to ensure the quality of ASUS products but does not indicate a particular fitness for military use. The test is performed under laboratory conditions. Any damage caused by attempts to replicate these test conditions would be considered accidental, and would not be covered by the standard ASUS warranty. Additional coverage is available with ASUS Premium Care.

ASUS ExpertCenter D9 Mini Tower (D901MDR)

Enterprise-grade security and scalable manageability



**Secure
manageability**



**Efficient
expandability**



**Tool-free
chassis**



**Ultimate
reliability**



- Up to Intel vPro® with Intel® Core™ 14th gen processor
- Redesigned tool-free chassis makes it easier to maintain and manage
- Built with industry-leading ASUS motherboards and tested to stringent ASUS and MIL-STD 810H US military standards
- Up to 128 GB DDR5 RAM and up to 8 GB storage
- Up to four displays simultaneously
- Supercharge your productivity with dedicated Copilot key



- Intel vPro® Enterprise and Essential are optional and their availability varies according to country. Please check with your local ASUS retailer for details.

- The testing regime includes the requirements of both military-grade standards and ASUS quality tests and varies depending on device. MIL-STD-810H testing is conducted on selected ASUS products only. Note that the MIL-STD-810H testing helps to ensure the quality of ASUS products but does not indicate a particular fitness for military use. The test is performed under laboratory conditions. Any damage caused by attempts to replicate these test conditions would be considered accidental, and would not be covered by the standard ASUS warranty. Additional coverage is available with ASUS Premium Care.

- Please note that ExpertCenter D9 Mini Tower includes up to 2 x 2TB M.2 SSD, and up to 2 x 2TB 3.5" HDD, for total storage capacity of up to 8TB.

a) Screen simulated, subject to change. Feature availability and rollout timing varies by market and device. b) Copilot in Windows (in preview) is rolling out gradually within the latest update to Windows 11 in select global markets. Timing of availability varies by device and market. Learn more: <https://www.microsoft.com/en-us/windows/copilot-ai-features?r=1#faq> c) Copilot with commercial data protection requires Microsoft 365 E3, E5, Business Standard, Business Premium or A3 or A5 for faculty, or accessed using Microsoft Entra ID.

- Terms and conditions apply. For more details, please read the full terms and published on <https://www.asus.com/content/asus-offers-adobe-creative-cloud/>.

ASUS ExpertCenter D9 SFF (D901SDR)

Maximum productivity, rock-solid reliability



**Secure
management**



**Compact
capability**



**Tool-free
chassis**



**Ultimate
reliability**



- Supports the Intel vPro® platform for enhanced management support
- 9L compact chassis with rotatable cage for maximum expandability
- Easy maintenance and upgrade with the tool-free chassis design
- Durability tested with MIL-STD 810H military standard and ASUS in-house testing
- Comprehensive connectivity for the real business connections
- Enterprise ready security with TPM 2.0 supports and more



- Intel vPro® Enterprise and Essential are optional and their availability varies according to country. Please check with your local ASUS retailer for details.

- The testing regime includes the requirements of both military-grade standards and ASUS quality tests and varies depending on device. MIL-STD-810H testing is conducted on selected ASUS products only. Note that the MIL-STD-810H testing helps to ensure the quality of ASUS products but does not indicate a particular fitness for military use. The test is performed under laboratory conditions. Any damage caused by attempts to replicate these test conditions would be considered accidental, and would not be covered by the standard ASUS warranty. Additional coverage is available with ASUS Premium Care.

- Trusted Platform Module (TPM) is optional.



ASUS ExpertCenter P400 AiO (P470VA)

Expansive vision for ever-expanding businesses

The ASUS ExpertCenter P400 AiO combines versatility and security to meet all business productivity needs. Powered by up to the Intel® Core™ i7 processor and ultra-fast Wi-Fi 7, it ensures peak performance. Its 27-inch wide-view FHD touchscreen enhances the visual experience, while the innovative retractable camera protects your privacy with a sleek design. Built with NIST SP 800-155 compliant BIOS and optional TPM 2.0, it keeps your business secure against potential threats.



Retractable
camera



Height-adjustable
stand



Microsoft
Copilot



ASUS
ExpertGuardian



- Up to Intel® Core™ i7 processor
- Dedicated Copilot key for more AI exploration
- Up to 64GB DDR5 RAM and up to 2TB SSD
- Ultra-fast Wi-Fi 7
- TÜV Rheinland-certified FHD touchscreen
- Dolby® Atmos certified dual 5W speakers



red dot winner 2024



- Wi-Fi 7 is optional and its availability may vary by country and their specific regulations. We recommend that you check with your local retailers to confirm the options available.

- Trusted Platform Module (TPM), height adjustable stand (HAS), touchscreen, and VESA are optional.

- 2 x M.2 SSD, up to 2 TB PCIe® 4.0 SSD.

- Copilot availability and rollout timing varies by market. Copilot with commercial data protection requires Microsoft 365 E3, E5, Business Standard, Business Premium or A3 or A5 for faculty, or accessed using Microsoft Entra ID.

ASUS ExpertCenter P400 AiO (P440VA)

Expansive vision for ever-expanding businesses



Retractable
camera



Height-adjustable
stand



Microsoft
Copilot



ASUS
ExpertGuardian



- Up to Intel® Core™ i7 processor
- Dedicated Copilot key for more AI exploration
- Up to 64GB DDR5 RAM and up to 2TB SSD
- Ultra-fast WiFi 7
- TÜV Rheinland-certified FHD touchscreen
- Dolby® Atmos certified dual 5W speakers



reddot winner 2024



- Wi-Fi 7 is optional and its availability may vary by country and their specific regulations. We recommend that you check with your local retailers to confirm the options available.
 - Trusted Platform Module (TPM), height adjustable stand (HAS), touchscreen, and VESA are optional.
 - 2 x M.2 SSD, up to 2 TB PCIe® 4.0 SSD.
 - Copilot availability and rollout timing varies by market. Copilot with commercial data protection requires Microsoft 365 E3, E5, Business Standard, Business Premium or A3 or A5 for faculty, or accessed using Microsoft Entra ID.



ASUS ExpertCenter P500 Mini Tower (P500MV)

Exceptional Value and Performance for Businesses

ASUS ExpertCenter P500 Mini Tower combines high-performance, business-grade security, and commercial-class services features in a compact and sleek design, providing budget-conscious small and medium business users with a flexible and organized workspace. Designed to withstand tough conditions and meet MIL-STD-810H US military standards, it features a tool-free and expandable chassis, ensuring prolonged reliability and convenient upgrades for professionals.



**Tower Air
Cooler**



**Microsoft
Copilot**



**Military-grade
durability**



**ASUS
ExpertGuardian**



- Up to Intel® Core™ i7 processor
- Up to NVIDIA® GeForce RTX 4060 discrete graphics
- Up to 64 GB DDR5 RAM
- Dedicated Copilot key for more AI exploration
- 34% faster than traditional commercial desktops
- Tool-free chassis for easy maintenance and upgrades



• NVIDIA discrete graphics are available on selected models only. Availability varies by country and region.
• Comparing ASUS ExpertCenter P500 Mini Tower with Intel® Core™ i7-13620H mobile processor to a traditional desktop with Intel® Core™ i5-13400 desktop processor. With both of them falling into a similar price range. All performance claims are based on theoretical performance. Actual figures may vary in real-world situations.
• Copilot availability and rollout timing varies by market. Copilot with commercial data protection requires Microsoft 365 E3, E5, Business Standard, Business Premium or A3 or A5 for faculty, or accessed using Microsoft Entra ID.

ASUS Chromebook CR1 (CR1100)

The rugged, student-centric study mate

US military
grade durabilityAll-round
rubber bumperSpill-resistant
keyboardModular
design

- Rugged design with military-grade reliability
- Antimicrobial treatment to keep student laptop hygiene
- Modular construction allows key components to be quickly replaced
- Low blue light display certified by TÜV Rheinland
- 180° lay-flat hinge provides adaptability for an enriched educational experiences
- Tamper resistance is enhanced to prevent the keys from being pried out



ASUS Chromebook CR11 (CR1104CTA)

Learning without limits

All-round
rubber bumper180° lay-flat
designASUS
Antimicrobial
GuardModular easy-
maintenance design

- Up to Intel® Processor N250
- Up to 16 GB RAM, 128 GB eMMC, WiFi 6E¹ and 4G LTE² for fast connectivity
- 11.6-inch Corning® Gorilla® Glass³ touchscreen protects against scratches and chips, plus rubber bumper for all-around protection
- MIL-STD 810H US military-grade⁴ durability for everyday strength
- Up to 1080p FHD front-facing webcam provides students with clearer image quality
- Easy-to-service modular design for easy maintenance and minimized downtime



1. WiFi 6E network card is available on selected models. The connectivity of WiFi 6E band may vary according to the regulation and certification of each country/region.

2. 4G LTE is optional.

3. Corning® Gorilla® Glass only applies to touchscreen SKU.

4. The testing regime includes the requirements of both military-grade standards and ASUS quality tests, and varies depending on device. MIL-STD-810 testing is conducted on selected ASUS products only. Note that the MIL-STD-810 testing helps to ensure the quality of ASUS products but does not indicate a particular fitness for military use. The test is performed under laboratory conditions. Any damage caused by attempts to replicate these test conditions would be considered accidental, and would not be covered by the standard ASUS warranty. Additional coverage is available with ASUS Premium Care.

ASUS Chromebook CR11 Flip (CR1104FTA)

Learning without limits



All-round
rubber bumper



Versatile 360°
design



ASUS
Antimicrobial
Guard



Modular easy-
maintenance design



- Up to Intel® Processor N250
- Up to 16 GB RAM, 128 GB eMMC, WiFi 6E¹ and 4G LTE² for fast connectivity
- 11.6-inch Corning® Gorilla® Glass touchscreen protects against scratches and chips, plus rubber bumper for all-around protection
- MIL-STD 810H US military-grade³ durability for everyday strength
- 360°-flippable hinge provides adaptability for an enriched educational experience
- Up to 1080p FHD front-facing webcam and a 13MP world-facing camera provide students with clearer image quality

1. WiFi 6E network card is available on selected models. The connectivity of WiFi 6E band may vary according to the regulation and certification of each country/region.

2. 4G LTE is optional.

3. The testing regime includes the requirements of both military-grade standards and ASUS quality tests, and varies depending on device. MIL-STD-810 testing is conducted on selected ASUS products only. Note that the MIL-STD-810 testing helps to ensure the quality of ASUS products but does not indicate a particular fitness for military use. The test is performed under laboratory conditions. Any damage caused by attempts to replicate these test conditions would be considered accidental, and would not be covered by the standard ASUS warranty. Additional coverage is available with ASUS Premium Care.



ASUS Chromebook CR12 (CR1204CTA)

Learning without limits



All-round
rubber bumper



180° lay-flat
design



Comfortable
12-inch display



Modular easy-
maintenance design



- Up to Intel® Processor N250
- Up to 16 GB RAM, 128 GB eMMC, WiFi 6E¹ and 4G LTE² for fast connectivity
- 12.2-inch Corning® Gorilla® Glass touch panel³ protects against scratches and chips, plus rubber bumper for all-around protection
- Up to 1080p FHD front-facing webcam provides students with clearer image quality
- Easy-to-service modular design for easy maintenance and minimized downtime

1. WiFi 6E network card is available on selected models. The connectivity of WiFi 6E band may vary according to the regulation and certification of each country/region.

2. 4G LTE is optional.

3. Corning® Gorilla® Glass is optional and only applies to touchscreen SKU.





ASUS Chromebook CR12 Flip (CR1204FTA)

Learning without limits

ASUS CR1204 series offers versatile tools and capabilities for K-12 students to learn and for teachers to easily manage. Its rugged and modular design, with replaceable internal parts, ensures a long-lasting product lifespan. Featuring a larger 12.2-inch Corning® Gorilla® Glass screen with a 180° lay-flat and 360°-flippable hinge, it provides flexibility for an enriched educational experience. This fosters the adventurous mindset of modern students, creating an enjoyable and secure learning journey.



All-round
rubber bumper



Versatile 360°
design



Comfortable
12-inch display



Modular easy-
maintenance design



- Up to Intel® Processor N250
- Up to 16 GB RAM, 128 GB eMMC, WiFi 6E¹ and 4G LTE² for fast connectivity
- 12.2-inch Corning® Gorilla® Glass touch panel protects against scratches and chips, plus rubber bumper for all-around protection
- MIL-STD 810H US military-grade³ durability for everyday strength
- 360°-flippable hinge provides adaptability for an enriched educational experiences
- Up to 1080p FHD front-facing webcam and a 13MP world-facing camera provide students with clearer image quality



1. WiFi 6E network card is available on selected models. The connectivity of WiFi 6E band may vary according to the regulation and certification of each country/region.

2. 4G LTE is optional.

3. The testing regime includes the requirements of both military-grade standards and ASUS quality tests, and varies depending on device. MIL-STD-810 testing is conducted on selected ASUS products only. Note that the MIL-STD-810 testing helps to ensure the quality of ASUS products but does not indicate a particular fitness for military use. The test is performed under laboratory conditions. Any damage caused by attempts to replicate these test conditions would be considered accidental, and would not be covered by the standard ASUS warranty. Additional coverage is available with ASUS Premium Care.

ASUS Chromebook CZ11 (CZ1104C)

The rugged, student-centric study mate



All-round
rubber bumper



180° lay-flat
design



ASUS
Antimicrobial
Guard



Modular easy-
maintenance design



- Powered by MediaTek Kompanio 520 processor
- 11.6-inch Corning® Gorilla® Glass^{1,2} touchscreen protects against scratches and chips, plus rubber bumper for all-around protection
- Up to 8 GB RAM, 128 GB eMMC, WiFi 6 and 4G LTE¹ for fast connectivity
- MIL-STD 810H US military-grade durability for everyday strength
- 180° lay-flat hinge provides flexibility and enriched educational experiences
- Easy-to-service modular design for easy maintenance and full I/O ports for convenient learning experiences



1. Corning® Gorilla® Glass touchscreen and 4G LTE are optional.
2. Corning® Gorilla® Glass only applies to touchscreen SKU.

ASUS Chromebook CZ11 Flip (CZ1104F)

The rugged, student-centric study mate



All-round
rubber bumper



Versatile 360°
design



ASUS
Antimicrobial
Guard



Modular easy-
maintenance design



- Powered by MediaTek Kompanio 520 processor
- 11.6-inch Corning® Gorilla® Glass touchscreen protects against scratches and chips, plus rubber bumper for all-around protection
- Up to 8 GB RAM, 128 GB eMMC, WiFi 6 and 4G LTE¹ for fast connectivity
- MIL-STD 810H US military-grade durability for everyday strength
- 360°-flippable hinge provides flexibility and enriched educational experiences
- Easy-to-service modular design for easy maintenance and full I/O ports for convenient learning experiences



1. 4G LTE is optional.

ASUS Chromebook CZ12 (CZ1204C)

The rugged, student-centric study mate



All-round
rubber bumper



180° lay-flat
design



Comfortable
12-inch display



Modular easy-
maintenance design



- Powered by MediaTek Kompanio 520 processor
- 12.2-inch Corning® Gorilla® Glass^{1,2} touchscreen protects against scratches and chips, plus rubber bumper for all-around protection
- Up to 8 GB RAM, 128 GB eMMC, WiFi 6 and 4G LTE¹ for fast connectivity
- MIL-STD 810H US military-grade durability for everyday strength
- 180° lay-flat hinge provides flexibility and enriched educational experiences
- Easy-to-service modular design for easy maintenance and full I/O ports for convenient learning experiences



1. Corning® Gorilla® Glass touch panel and 4G LTE are optional.
2. Corning® Gorilla® Glass only applies to touchscreen SKU.



ASUS Chromebook CZ12 Flip (CZ1204F)

The rugged, student-centric study mate

ASUS CZ1204 series is an ideal study companion for K-12 students, offering a portable and robust design that ensures lasting value, empowering students to learn anytime and anywhere. With a 180° lay-flat and 360°-flippable design, and a 12.2-inch 16:10 WUXGA display featuring TÜV-certified technology, the series maximizes the visual experience while prioritizing eye protection. Its long battery life enables seamless use throughout a full day of classes, empowering students to extend their learning further.



All-round
rubber bumper



Versatile 360°
design



Comfortable
12-inch display



Modular easy-
maintenance design



- Powered by MediaTek Kompanio 520 processor
- 12.2-inch Corning® Gorilla® Glass touch panel protects against scratches and chips, plus rubber bumper for all-around protection
- Up to 8 GB RAM, 128 GB eMMC, WiFi 6 and 4G LTE¹ for fast connectivity
- MIL-STD 810H US military-grade durability for everyday strength
- 360°-flippable hinge provides flexibility and enriched educational experiences
- Easy-to-service modular design for easy maintenance and full I/O ports for convenient learning experiences



1. 4G LTE is optional.

ASUS Chromebook CX14 (CX1405)

Your Stylish Essential



Versatile and
stylish design



16:9 FHD display



Thoughtful I/O
ports



WiFi 6E



- Stylish and sustainable, with up to four fun color options
- Up to Intel® Core™ 3 N355 processor with 16GB LPDDR5 memory
- 14-inch 16:9 FHD display for an immersive visual experience
- Full I/O port with HDMI support
- Up to WiFi 6E and Bluetooth 5.3 connectivity
- Complimentary Google One AI Premium plan*



reddot winner 2025



*\$59.97 value, for a limited time only. \$19.99/month at offer end. Cancel anytime. See g.co/chromebook/ai-premium-offer for full terms.

ASUS Chromebook Plus CX14 (CX1405)

Style Meets Power



Versatile and
stylish design



16:9 FHD display



Thoughtful I/O
ports



Google AI
Features

- Stylish and sustainable
- Intel® Core™ 3 N355 processor with Google AI
- 14 inch 16:9 FHD display for an immersive visual experience
- Full I/O port with HDMI support
- Up to WiFi 6E and Bluetooth 5.3 connectivity
- Complimentary Google One AI Premium plan*



reddot winner 2025



*\$239.88 value, for a limited time only. See g.co/chromebook/ai-premium-offer for full terms.



ASUS Chromebook CX1 (CX1400)

Get more done every day, from anywhere

ASUS Chromebook CX1 is made for boosting productivity at school and having fun, even while on the move. This lightweight, ultraportable device is powered by up to a quad-core Intel® processor, giving you the freedom of up to 12-hour battery life¹. The slim-bezel design fits more screen into the compact chassis, making it easy for learning and multitasking. With smooth performance, robust security, and convenient features, ASUS Chromebook CX1 is perfect for students and teachers.



Lightweight



Fast, stable
connections



US military - grade
durability



Long lasting
battery life



- ChromeOS
- Up to Intel® Pentium® processor
- Up to Intel® UHD graphics
- Up to 128GB eMMC storage
- Up to 8GB memory
- Up to 14" FHD anti-glare display



¹. Based on Chromium OS power Load Test.

ASUS Chromebook Flip CX1 (CX1400F)

Flip to do more, every day



360° hinge



Fast, stable
connections



US military - grade
durability



Long lasting
battery life



- ChromeOS
- Up to Intel® Pentium® processor
- Up to Intel® UHD graphics
- Up to 128 GB eMMC storage
- Up to 8 GB memory
- 14" FHD touchscreen display



ASUS Chromebook CX15 (CX1505)

Your Stylish Essential



Versatile and
stylish design



16:9 FHD display



Thoughtful I/O
ports



WiFi 6E



- Stylish and sustainable, with up to four fun color options
- Up to Intel® Core™ 3 N355 processor with 16GB LPDDR5 memory
- 15.6-inch 16:9 FHD display for an immersive visual experience
- Full I/O port with HDMI support
- Up to Wi-Fi 6E and Bluetooth 5.3 connectivity
- Complimentary Google One AI Premium plan*



reddot winner 2025



*\$59.97 value, for a limited time only. \$19.99/month at offer end. Cancel anytime. See g.co/chromebook/ai-premium-offer for full terms.

ASUS Chromebook Plus CX15 (CX1505)

Your Ultimate Style



Versatile and
stylish design



FHD 16:9 FHD display



Thoughtful I/O
ports



Google AI
Features

- Stylish and sustainable
- Intel® Core™ 3 N355 processor with Google AI
- 15.6-inch 16:9 FHD display for an immersive visual experience
- Full I/O port with HDMI support
- Up to WiFi 6E and Bluetooth 5.3 connectivity
- Complimentary Google One AI Premium plan*



reddot winner 2025



*\$239.88 value, for a limited time only. See g.co/chromebook/ai-premium-offer for full terms.

ASUS Chromebook CX1 (CX1500)

Get more done every day, from anywhere



US military - grade
durability



Long lasting
battery life



Fast, stable
connections



Flexible 180°
lay-flat hinge



- ChromeOS
- Up to 8 GB memory
- Up to 64 GB eMMC
- Up to 15.6" FHD 1920x1080 Anti-glare display
- Up to Intel® Pentium® Silver N6000 quad-core processor
- 1.4 mm key travel



ASUS Chromebook Flip CX1 (CX1500F)

Flip to do more, every day



360° hinge



Fast, stable
connections



US military - grade
durability



Long lasting
battery life



- ChromeOS
- Up to Intel® Pentium® processor
- Up to Intel® UHD graphics
- Up to 128 GB eMMC storage
- Up to 8 GB memory
- 15.6" FHD touchscreen display



ASUS Chromebook CM14 (CM1402C)

The everyday companion that does more



MediaTek Kompanio
520 processor



Level-up
camera



Spill-resistant
keyboard



ASUS
Antimicrobial
Guard



- ChromeOS
- MediaTek Kompanio 520 processor
- Up to 128GB eMMC
- Up to 8GB memory
- 180° lay-flat hinge
- 14" anti-glare display



ASUS Chromebook CM14 Flip (CM1402F)

The everyday companion that does more



360° hinge



MediaTek Kompanio
520 processor



Level-up
camera



Spill-resistant
keyboard



- ChromeOS
- MediaTek Kompanio 520 processor
- Up to 128GB eMMC
- Up to 8GB memory
- Versatile 360° hinge with garaged stylus¹
- 14" touchscreen display



1. The garaged stylus is optional.



ASUS Chromebook CM30 Detachable (CM3001)

Versatile modes, boundless delight

ASUS Chromebook CM30 Detachable is the perfect companion for study and play. The device has a versatile 2-in-1 design that allows it to transform seamlessly between laptop and tablet, a push-pop stylus¹ to quickly capture ideas and study notes, and both front and world-facing cameras. ASUS Chromebook CM30 Detachable is your effective, fun and freeing study partner — ready to empower and delight at every turn.



**Versatility for
endless possibilities**



**Perfect for
on-the-go**



**Packed with
extra strength**



**Creative and
productive**



- Easily transform between laptop and tablet
- Two-way push-pop garaged stylus¹
- 10.5-inch 16:10 WUXGA display
- US military grade MIL-STD 810H standard²
- Impact shield for optimal protection³
- Wi-Fi 6 technology⁴ and 4G LTE⁵



1. Stylus is optional

2. The testing regime includes the requirements of military-grade standards, and varies depending on device.

3. Impact shield is optional

4. The connectivity of Wi-Fi 6 band may vary according to the regulation and certification of each country/region.

5. This feature varies by region.

ASUS Chromebook Plus CM34 Flip (CM3401)

Your secure and capable companion



Up to AMD Ryzen™
57520C processor



Fingerprint
sensor



ASUS
Antimicrobial
Guard



Webcam
shutter



- ASUS Chromebook Plus Enterprise CM34 Flip with Chrome Enterprise Upgrade
- Powerful performance with AMD Ryzen™ 5 processors
- 13 hours¹ all-day-long battery life for work
- Adjusting any-angle with 360° Ergo-Lift hinge
- Fast WiFi 6 to keep you connected anywhere
- The garaged stylus² for unleashing creativity



1. Battery life varies according to device, usage scenarios and other conditions.
2. The garaged stylus is optional.

ASUS Chromebook Plus CX34 (CX3402)

Every experience, stepped up



The power to
stay productive



Crystal
clear calls



Fast and stable
connections



Seamless
visual



- Up to 12th Gen. Intel® Core™ i7 processor
- Chromebook Plus with AI powered apps
- 14" inch 1920x1080 FHD 250nits display for immersive experience
- FHD webcam for high-quality visuals
- Wi-Fi 6 technology
- Efficient and intuitive control with optional touchscreen



reddot winner 2024



ASUS ExpertBook CX54 Chromebook Plus (CX5403)

Elevate your competitive edge



Intel® Core™
Ultra powered



High def
viewing



Sustainably
sleek



World-class
WiFi



- The first ASUS Expert Chromebook Plus with Intel® Core™ Ultra
- 8M HDR web camera with AI-powered tools
- Ultralight all metal chassis
- High-resolution WQXGA (2560x1600) display with optional touchscreen
- 89% screen-to-body ratio with 3-sided NanoEdge design



ASUS Vivobook S 14 Flip (TP3402VA)

Wow the World with True Power



360° hinge



Up to NanoEdge OLED
touchscreen display



Fast, stable
connections



Long lasting
battery life



- Up to Intel® Core™ i9-13900H processor
- Durable 360° hinge
- Up to NanoEdge OLED touchscreen display
- ASUS Pen 2.0 support
- Comprehensive I/O ports
- Fast charging



ASUS Vivobook 14 (X1404VAP)

Make every day your day



180° hinge



Up to Intel® Core™ 7
processor (Series 1)



Fast
charging



US military-grade
durability



- Up to Intel® Core™ 7 processor (Series 1)
- Durable 180° hinge
- US military grade durability
- Fast charging
- Comprehensive I/O ports
- NanoEdge display



ASUS Vivobook 15 (X1504VAP)

Make every day your day



180° hinge



Up to Intel® Core™ 7 processor (Series 1)



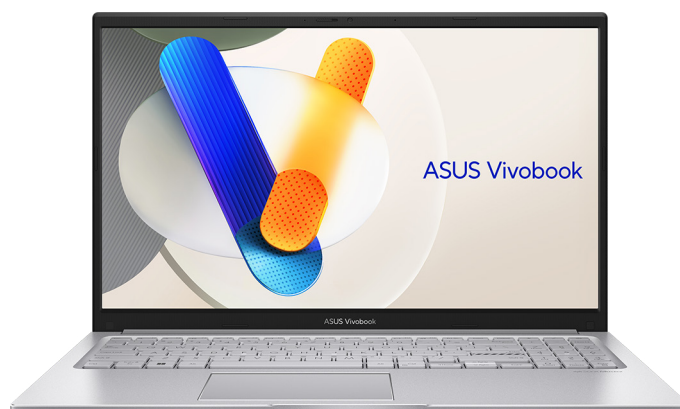
Fast charging



US military-grade durability



- Up to Intel® Core™ 7 processor (Series 1)
- Durable 180° hinge
- US military grade durability
- Fast charging
- Comprehensive I/O ports
- NanoEdge display



ASUS Vivobook Go 14 (E1404GA)

Go with your productivity!



180° hinge



US military-grade durability



Fingerprint sensor



Fast charging



- Up to Intel® Core™ i3-N305 processor
- Durable 180° hinge
- US military grade durability
- Fast charging
- Comprehensive I/O ports
- NanoEdge display



ProArt P16 ^(H7606)

Creativity Unrivaled, Anywhere

Meet ProArt P16 – your ultimate creative companion for the studio and on the move. Its OLED touchscreen ensures precise color accuracy for flawless proofing, while versatile I/O ports seamlessly connect all your peripherals. This NVIDIA® Studio-validated laptop packs a GeForce RTX™ 40 Series Laptop GPU, providing powerful graphics and 321 TOPS AI performance. Additionally, it features up to a 50 TOPS AMD Ryzen™ AI 9 HX 370 processor, delivering exceptional processing power. With AI-enhanced creative features, military-grade toughness, and a long-lasting battery, ProArt P16 transforms any setting into your studio.



Next-level AI PC
for creativity



Up to AMD Ryzen™ AI 9
HX 370 processor



Up to NVIDIA®
GeForce RTX™ 4070



16" 4K OLED HDR
16:10 display



- Up to AMD Ryzen™ AI 9 HX 370 processor with 50 AI TOPS processing power and NVIDIA® GeForce RTX™ 4070 Laptop GPU with 321 AI TOPS
- ASUS-exclusive AI apps StoryCube & MuseTree for smarter & more streamlined creation
- 16" 4K 16:10 ASUS Lumina OLED touchscreen
- 14.9 mm, 1.85 kg light for on-the-go powerful creation



ProArt PX13 (HN7306)

Creativity Unbound, Anywhere

Meet ProArt PX13 – your go-to 13-inch convertible laptop, designed to effortlessly switch between forms, ready to fuel your creative passion whenever inspiration strikes. Its OLED touchscreen ensures precise color accuracy for flawless proofing, while versatile I/O ports seamlessly connect all your peripherals. This NVIDIA® Studio-validated laptop packs a GeForce RTX™ 40 Series Laptop GPU, providing powerful graphics and 321 TOPS AI performance. Additionally, it features up to a 50 TOPS AMD Ryzen™ AI 9 HX 370 processor, delivering exceptional processing power. With AI-enhanced creative features, military-grade toughness, and a long-lasting battery, ProArt PX13 transforms any setting into your studio.



Next-level AI PC
for creativity



Up to AMD Ryzen™ AI 9
HX 370 processor



Up to NVIDIA®
GeForce RTX™ 4070



13" 3K OLED HDR
16:10 display



- Up to AMD Ryzen™ AI 9 HX 370 processor with 50 AI TOPS processing power and NVIDIA® GeForce RTX™ 4070 Laptop GPU with 321 AI TOPS
- ASUS-exclusive AI apps StoryCube & MuseTree for smarter & more streamlined creation
- 13" 3K 16:10 ASUS Lumina OLED touchscreen
- 1.38 kg light convertible form factor for on-the-go powerful creation



ProArt PZ13 (HT5306)

Creativity Unplugged, Anywhere

Introducing ProArt PZ13, an IP52-rated and military-grade-tested detachable laptop for active creators that excels outdoors. Its OLED touchscreen gives you an incomparable viewing experience, and it's powered by Snapdragon® X Plus processor with 45 TOPS NPU that unleashes AI-enhanced creativity without sacrificing battery life. Versatile accessories to boost productivity include a detachable keyboard and ASUS Pen 2.0. A full set of I/O ports, including an SD slot with a microSD adapter, simplifies device connectivity and photo transfers. Its slim & light build marries advanced tech with a superior user experience, making creativity accessible to everyone, everywhere.



Snapdragon® X Plus
processor with
Qualcomm AI Engine



IP52 resists dust and
water ingress



13" 3K OLED HDR
16:10 display



0.85 kg light and
9 mm thin for
high portability



- Copilot+ PC: The fastest, most intelligent Windows PC ever
- Snapdragon® X Plus processor with dedicated AI engine
- ASUS-exclusive AI apps StoryCube for smarter & more streamlined creation
- 13" 3K 16:10 ASUS Lumina OLED touchscreen
- IP52-rated and tested military-grade ensure maximum durability
- Versatile accessories with soft keyboard, magnetic stand and ASUS Pen 2.0



ROG ZEPHYRUS G14 (GA403)

Performance Meets Precision



Up to an AMD Ryzen™ AI 9 HX 370 processor and up to an NVIDIA® GeForce RTX™ 5080 Laptop GPU



3K ROG Nebula Display with an OLED panel, 120Hz/0.2ms, 100% DCI-P3



1.5kg weight, 1.59cm thinnest, USB Type-C with DP 2.1 and PD 3.0 support



- Enjoy effortless Windows 11 Pro gaming and creation with up to an AMD Ryzen™ AI 9 HX 370 processor
- Game and create with up to an NVIDIA® GeForce RTX™ 5080 Laptop GPU
- 3K ROG Nebula Display with an OLED panel, 120Hz/0.2ms, 100% DCI-P3
- Ultra-slim 1.59cm thick, 1.5kg design, USB Type-C with DP 2.1 and PD 3.0 support
- High-performance heatpipes, Tri-Fan Technology*, and improved 2nd Gen Arc Flow Fans*
- Fully Copilot PC certified, Advanced AI computing power on both CPU and GPU



*Varies by SKU

ROG STRIX SCAR 18 (G835)

VICTORY, ACCELERATED.



Up to Intel® Core™ Ultra 9 processor 275HX



Up to an NVIDIA GeForce RTX™ 5090 Laptop GPU with 175W max TGP



ROG Intelligent Cooling



ROG Nebula HDR Display



- Enjoy effortless Windows 11 Pro gaming performance with the Strix SCAR 18
- Up to Intel® Core™ Ultra 9 processor 275HX with 80W TDP
- Up to NVIDIA® GeForce RTX™ 5090 Laptop GPU with 175W max TGP
- An end-to-end vapor chamber paired with a sandwiched heatsink, Tri-Fan Technology, and Conduction Extreme liquid metal on CPU and GPU
- 18-inch 2.5K Nebula HDR Display with Mini LED, over 2K dimming zones, 16:10 aspect ratio, 240Hz/3ms, 100% DCI-P3, and ACR technology
- Up to 64GB DDR5 5600 RAM and 4TB PCIe Gen4 SSD in Raid 0, both easily upgradable thanks to a tool-less access design



ROG FLOW Z13 (GZ302)

Compact is the new impact



Powered by AMD Ryzen™ AI Max+ 395 processor, the Flow Z13 features unified quad channel memory.



ROG Intelligent Cooling with a revamped stainless steel vapor chamber.



180Hz Nebula Display with Corning Gorilla® Glass 5.



- Powered by AMD Ryzen™ AI Max+ 395 processor with support for Copilot, the Flow Z13 features 16 Zen 5 CPU cores and an RDNA 3.5 GPU with performance on par with dedicated graphics.
- This new processor uses unified quad channel memory, allowing the CPU and GPU cores to share access the RAM for lower latency and higher performance.
- Play your way thanks to the incredible portability of the Flow Z13, with a portable 13-inch CNC aluminum chassis, a 70Wh battery, and support for an array of input styles.
- A revamped stainless steel vapor chamber, and 2ndGen Arc Flow Fans™ keep the Flow incredibly quiet even while running at full load.
- Content pops to life on the Flow Z13's vibrant 2.5K 180Hz Nebula Display, which is Pantone® validated and covers 100% of the DCI-P3 color space.
- The Flow Z13 features a new Command Center button with quick access to system functions, a large touchpad and keycaps, and a kickstand with 170° of adjustment.



ROG ZEPHYRUS G16 (GU605)

Performance Meets Precision



Intel® Core™ Ultra 9 processor 285H and up to an NVIDIA® GeForce RTX™ 5090 Laptop GPU



2.5K OLED 240Hz/0.2ms Nebula Display, with VESA DisplayHDR True Black 500 support



Ultra slim 1.49cm, 1.85kg 16-inch premium aluminum chassis with unique slash lighting design



- Enjoy effortless Windows 11 Pro gaming and creating with an Intel® Core™ Ultra 9 processor 285H
- Game and create with up to an NVIDIA® GeForce RTX™ 5090 Laptop GPU
- 2.5K OLED 240Hz/0.2ms Nebula Display, with VESA DisplayHDR True Black 500 support
- ROG Intelligent Cooling tech, including a vapor chamber*, Tri-Fan Technology*, liquid metal, improved heatpipes and Arc Flow Fans™ 2.0
- Ultra slim 1.49cm, 1.85kg 16-inch premium aluminum chassis with unique slash lighting design
- Ample I/O support, USB Type-C with DP 2.1 and PD 3.0 support



*vary by sku



ROG G700

58L of pure gaming power.

Featuring up to an Intel® Core™ Ultra 9 processor 285K or up to an AMD Ryzen™ 7 9800X3D processor. The G700 comes equipped with up to a NVIDIA® GeForce RTX™ 5090 provides fast and smooth AAA gaming and effortless content creation.



Up to an Intel® Core™ Ultra 9 processor or an AMD Ryzen™ 7 processor. Up to an NVIDIA® GeForce RTX™ 5090 GPU.



Up to 64GB of DDR5 RAM.



Available in both air and water cooled configurations.



Tool-free access with removable front and side panels.



- Up to an NVIDIA® GeForce RTX™ 5090 GPU
- Up to an Intel® Core™ Ultra 9 processor 285K or an AMD Ryzen™ 7 9800X3D processor
- Up To 64GB DDR5 RAM With Pcie Gen 5 Storage
- Available in both air and water cooled configurations.
- Quad-fan system with dual intake and dual exhaust.
- Tool-free access with removable front and side panels.





TUF GAMING T500

Optimized for victory.

The TUF Gaming T500 is powered by up to an NVIDIA® GeForce RTX™ 5060 Ti GPU and up to an Intel® Core™ i7-13620H processor. With up to 64GB of DDR5 RAM and PCIe Gen 4 storage, the T500 easily handles multitasking and smooth gameplay.



Up to an NVIDIA®
GeForce RTX™
5060 Ti GPU



Up to an Intel®
Core™ i7-13620H



Up to 64GB of DDR5
RAM and high-speed
PCIe Gen 4 storage



MIL-STD 810H
Tested.



- Up to an NVIDIA® GeForce RTX™ 5060 Ti GPU
- Up to an Intel® Core™ i7-13620h Processor
- Up To 64GB DDR5 RAM With PCIe Gen 4 Storage
- Game, stream, and do everything in between with serious horsepower on tap
- Passed rigorous military-grade testing, showcasing exceptional durability
- AURA Sync Support With Customizable Lighting Effects



ASUS SimPro Dock 2

Your one-stop connection station

ASUS SimPro Dock 2 is a sleek, compact one-stop dock that streamlines laptop connectivity. Attach your laptop via a single cable and it's powered, connected to your network and peripherals, and is primed for multitasking across up to four monitors¹ — including an up to 8K display². It also has an integrated smart card reader for a diverse array of business. Simply, SimPro Dock 2 keeps your desk neat, tidy and organized while setting you up for work in the blink of an eye.^{3,4}



A full set of
IO ports



Up to four displays
connection



Smart card
reader



Fast charging
support



- Light weight from 650g
- 9.9 (W) x 16.15 (D) x 4.06 (H) cm
- Connect up to four displays¹ at once
- User authentication and security for a diverse array of business applications
- Supports up to 6A of power throughput for rapid charging



¹ ASUS SimPro Dock 2 display support varies by the processor and graphics capabilities of the connected laptop. Please check specifications for full details.

² ASUS SimPro Dock 2 supports up to one 8K display for a laptop which supports DSC (Display Stream Compression).

³ ASUS SimPro Dock 2 is compatible with certain ASUS laptops as well as non-ASUS laptops. SimPro Dock 2 works with laptops that support the industry-standard USB-C™ Alternate Mode or Thunderbolt™ protocols via the type-C™ port.

⁴ SimPro Dock 2 supports additional features, such as MAC address passthrough, WOL, multiple display support and mirrored power button, on many ASUS laptops and displays. Some features may not be available on certain ASUS laptops, ASUS Chromebook, or non-ASUS laptops.



ProArt Mouse MD300

ASUS ProArt Mouse MD300 is the first mouse that works with ASUS Dial, allowing creators to make quick and precise settings adjustments. This premium mouse also features a side scroll wheel and three buttons with professional-grade switches that provide tactile mouse clicks. ProArt Mouse MD300 has a high-performance sensor that tracks at up to 4200 dpi for unmatched precision, even when used on a glass surface.



ASUS SmartO Mouse MD200

ASUS SmartO Mouse is tailor-made to help you work faster, better and smarter. It has been meticulously crafted for a luxurious, low-profile aesthetic with superior ergonomics to provide comfortable, effortless all-day use. With a unique elastic carrying loop and a high-performance sensor that gives it the ability to work on almost any surface, including glass, ASUS SmartO Mouse perfectly combines flexibility, style and functionality. It is your perfect executive partner.



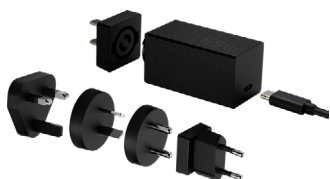
ASUS W5000 Wireless Keyboard & Mouse Set

ASUS W5000 is a wireless keyboard and mouse set designed to free you from being tethered to your PC or laptop. The low-profile keyboard measures an ultrathin 11mm and features chiclet keys with durable, high-quality rubber dome switches for silent, responsive keystrokes.



ASUS Wireless Keyboard & Mouse Set CW100

The ASUS Wireless Keyboard and Mouse Set CW100 gives you unmatched convenience and reliable performance, connecting to your PC or laptop via a single 2.4 GHz nano-transceiver with a range of up to 10 meters. Built-in powersaving technology helps prolong battery life by going into sleep mode when not in use.



ASUS Ultra Mini Universal Adapter

Engineered for easy travel, ASUS 65W USB-C Ultra Mini Universal Adapter features a compact design, high compatibility and changeable plugs, allowing on-the-go pros to charge quickly and easily. With fast-charge support for seamless productivity and integrated overheat and overpower protection, it's the small, smart and lightweight charger that packs a whole lot of power — perfect for your worldwide travels.



ASUS Pen 2.0 SA203H

ASUS Pen 2.0 is the perfect match for your compatible ASUS touchscreen devices, giving you the ability to write, draw or add markup in any supported app. Built-in Microsoft Pen Protocol (MPP) 2.0 technology offers ultra-low latency and fast response, allowing ASUS Pen 2.0 to accurately and effortlessly reproduce the finest lines and broadest brush strokes. A 4096-level pressure sensitivity and 5-350 gram pen tip force enables you to create detailed notes or drawings that accurately capture your thoughts.



ASUS Garaged Stylus SA304H

ASUS's SA304H stylus boasts a two-way push-pop design, ensuring convenience and ease of use. With 4096-level pressure sensitivity and minimal latency, it offers unparalleled accuracy in writing tasks. Its fast charging capability allows for a rapid 15-second full charge, providing an impressive 45 minutes of usage. Additionally, its versatility shines through with smooth performance at angles of up to 55°, enhancing flexibility in creative endeavors.



Clique H10

These exquisite wireless Bluetooth® headphones are specially designed to deliver sensational audio performance that enriches every music listening experience. Clique H10 redefines the Bluetooth® headphone experience with its sensational audio performance and versatile, sleek design. Unique lock-in ear fins ensure earbuds stay securely and comfortably in place during exercise 5+ hours of continuous listening and 260 hours of standby time.



ROG Strix Fusion Wireless

ROG Strix Fusion Wireless is a wireless headset designed to give you freedom of movement. Compatible with PC, its 2.4GHz wireless connection and dual-antenna design offer a more stable and instant audio transmission, letting you game freely and without interruption. Its 50mm ASUS Essence drivers and exclusive airtight chamber technology lets you hear every detail in the game, and its easy touch controls ensure a smooth experience. Get ready to enjoy unparalleled flexibility.



AI Noise-Canceling Mic Adapter

ASUS AI Noise-Canceling Mic Adapter is the world's first USB-C-to-3.5 mm adapter with integrated AI Noise-Canceling Microphone (AI Mic) technology. It uses AI-powered noise cancelation to deliver crystal clear voice communication when used with any 3.5 mm headset with a microphone. Weighing just 8 grams, it includes a digital-to-analogue converter (DAC) that includes exclusive ASUS Hyper-Grounding technology to prevent electromagnetic interference, giving you noise-free audio. Get a big upgrade on sound quality with this small device.



Docking station

The newly upgraded ASUS USB3.0 HZ-3A Plus Dock lets you easily connect your laptop to all your accessories, and also gives you convenient network and audio connections! It connects to your PC via a single USB cable, and features two USB 3.0 ports on each side that now support a powerful fast-charge function for quickly recharging your portable devices. We've also added a DC-out 90W charger port for charging your laptop at the mean time.



ASUS MHS07K monitor ergonomic stand

The ASUS MHS07K monitor ergonomic stand maximizes viewing comfort and improves productivity by giving tilt, pivot, swivel, and height adjustable capability for the ideal viewing position. For example, with the ASUS MHS07K monitor stand, users can pivot the monitor clockwise or counterclockwise 90° into a portrait orientation for less scrolling while reading longer e-mails and web pages.



ASUS MKT02 mini-PC Mounting Kit

The ASUS LCD monitor mounting solution, MKT02 Mini PC Kit, is designed to work with ASUS selective monitors for those who need to mount mini PCs on the monitor, to make the desktop clutter-free and space saving. Easily mount mini PCs on the selective stand to make the desktop clutter-free and space saving. The VESA is 100x100mm compatible.



ASUS Triple 4K Thunderbolt™ 4 Dock DC500

ASUS Triple 4K Thunderbolt™ 4 Dock is an all-in-one docking station designed for creators, and is the smallest 12-in-1 Thunderbolt™ 4 dock. It requires just a single cable connection to a creator laptop to hook up to multiple 4K displays and peripherals, as well as memory card readers for a complete, highly efficient creative workstation.



ASUS Triple Display USB-C Dock Duo DC301

ASUS Triple Display USB-C Dock Duo is a sleek, compact one-stop device that streamlines laptop connectivity. Power your laptop through a single cable, connect to your network and peripherals, and multitask with up to four monitors. Simply put ASUS Triple Display USB-C Dock Duo keeps your desk neat, tidy and organized while setting you up for work in the blink of an eye.



ASUS Triple Display USB-C Dock DC300

ASUS Triple Display USB-C Dock is a sleek, compact onestop device that streamlines laptop connectivity. Power your laptop through a single cable, connect to your network and peripherals, and multitask with up to four monitors – including a laptop monitor and three external monitors. It also has an integrated SD card reader for a diverse array of business scenarios. Simply put, ASUS Triple Display USB-C Dock keeps your desk neat, tidy and organized while setting you up for work in the blink of an eye.



ASUS Dual 4K USB-C Dock DC201

ASUS Dual 4K USB-C Dock DC201 is a compact, portable, and stylish 5-in-1 docking station that offers dual 4K output via HDMI® 2.1 or USB-C®, superfast 10 Gbps file transfers, Gigabit Ethernet, and up to 100-watt Power Delivery to power and charge the latest laptops and mobile devices. It offers users a world of convenience, efficiency, and productivity.



ASUS USB-C Mini Dock DC100

ASUS USB-C Mini Dock is a compact and lightweight USB-C® dock that gives PCs and laptops additional expandability options. It features a HDMI® with 4K output, USB Type-A and USB-C for up to 10 Gbps transfer speeds, plus up to 100 W power delivery passthrough.



ESC NM2N721-E1

ASUS AI POD with NVIDIA GB200 NVL72

This supercharged AI system is engineered to accelerate real-time trillion-parameter models like LLM and MoE, providing unparalleled performance for large-scale AI projects, hyperscale data centers and research initiatives. Tailored to enterprises and R&D teams driving innovation, ASUS AI POD empowers you to push the boundaries of what's possible, all while accelerating your time to market with the ASUS-exclusive software-driven approach.



NVIDIA
Blackwell-
Architecture



2nd-gen
Transformer
Engine



5th Gen NVIDIA
NVLink™
technology



Advance
Liquid-cooling
Architectures

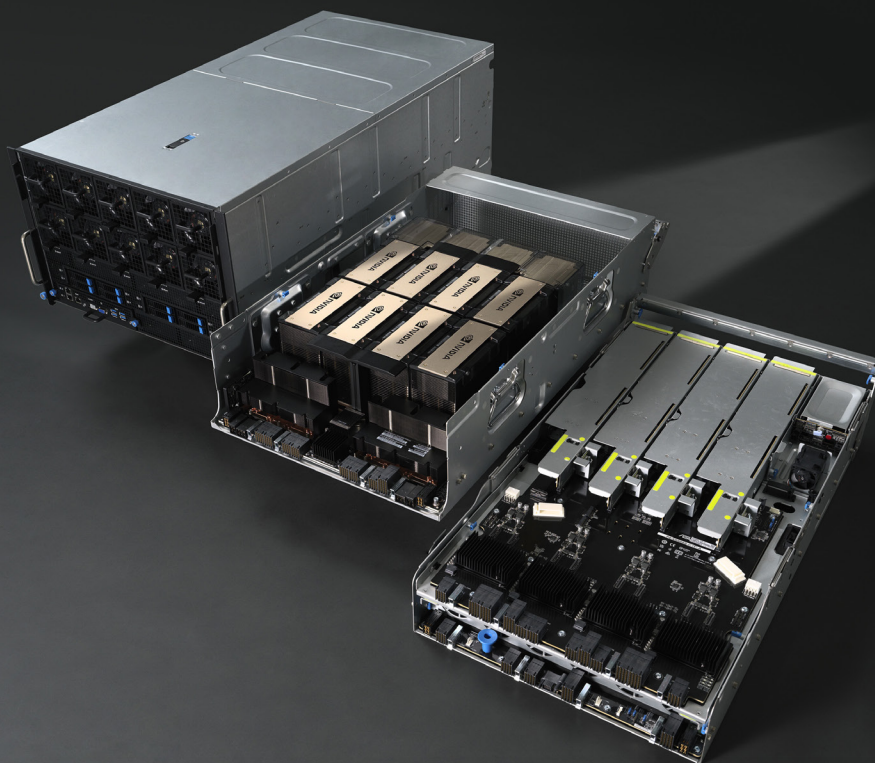


- 36 NVIDIA Grace™ CPUs
- 72 NVIDIA Blackwell GPUs
- 5th Gen NVIDIA NVLink™ technology
- Supports trillion-parameter LLM inference and training
- Scale-up ecosystem-ready
- ASUS infrastructure deployment center



Apply for NVIDIA GB200
NVL72 Online Test





ASUS ESC-N8-E11V

Best Choice for Heavy AI Workloads

This 7U NVIDIA HGX H200 8-GPU server, designed for generative AI, integrates optimized server systems and AI development tools by ASUS. It accelerates AI and data science with a one-GPU-to-one-NIC topology, supports up to eight NICs, and provides effective cooling, scalability, and high performance for compute-intensive workloads



End-to-End AI
Supercomputing
Platform



HGX NVIDIA HGX
Architecture



Modular design
with reduced
cable usage



Enhanced
ASMB11-iKVM
remote control



- Fueled by dual 5th Gen Intel® Xeon® Scalable processors, supporting 350W TDP
- Direct GPU-to-GPU interconnect via NVLink delivers 900GB/s bandwidth for efficient scaling
- Supports up to 8 NICs for the highest throughput during compute-intensive workloads
- The full power of NVIDIA GPUs, BlueField-3, NVLink, NVSwitch, and networking
- High level of power efficiency: 4+2 80 PLUS Titanium power supplies
- Supports direct-to-chip (D2C) cooling solution and features dedicated CPU and GPU airflow tunnels for efficient heat dissipation





ASUS ExpertCenter Pro ET900A X9

Power to Perform

Equipped with the latest AMD Ryzen™ Threadripper™ PRO CPU, supporting up to four NVIDIA® Quadro RTX™ graphics cards, DDR5 ECC RDIMM memory, and dual 10Gb LAN perfect for content creation and deep learning tasks.



AMD RYZEN™
processors



NVIDIA
Quadro® RTX



Up to eight DDR5
ECC RDIMM



Dual Onboard
10 Gb Ethernet



- Powered by AMD RYZEN Threadripper PRO 7000 WX-series processors and up to 2 TB DDR5 ECC RDIMM for exceptional performance and reliability.
- Supports up to four NVIDIA Quadro RTX graphics cards for powerful 2D/3D rendering and AI workloads.
- Seven PCIe 5.0 x16 slots for maximum expandability and future-proofing.
- Dual onboard 10 Gb LAN for ultra-fast, high-bandwidth, and low-latency connectivity.
- Supports up to four PCIe 5.0 M.2 slots and four SATA 6Gb/s ports for extensive storage options and high-speed data transfers.
- Two SlimSAS ports, ready for industrial-grade NVMe storage devices.
- ASUS Control Center Express empowers real-time IT monitoring and management for enhanced data protection.



AMD
THREADRIPPER
PRO

Pro Q870M-C-CSM

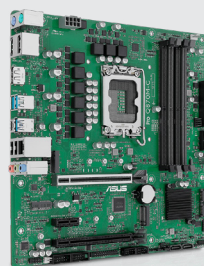
Micro-ATX Q870 business motherboard with Intel® vPro support and enhanced security, reliability and manageability



ASUS Corporate
Stable Model (CSM)



ASUS Control
Center Express



- Ready for Advanced AI PCs: Designed for the future of AI computing, with the power and connectivity needed for demanding AI applications
- Intel® LGA 1851 Socket: Ready for Intel® Core™ Ultra Processors (Series 2)
- ASUS CSM Program: A stable motherboard supply, end-of-life notifications, and IT software for business motherboards
- ASUS Control Center Express: Integrated IT monitoring and management software that simplifies enterprise-level system administration
- Enhanced System Security: A self-recovering BIOS, TPM to safeguard PCs and NIST SP 800-193 compliance
- Consistent and Reliable Performance: High-quality components and rigorous testing to help ensure durability in harsh environments
- Efficient Management and Customization: An event log and commercial BIOS kit to enable easy maintenance

ASUS ZenBeam L2 Smart Portable LED Projector

Effortless Cinema, Anywhere!



Power by
AndroidTV box



Google assistance
voice command



Harman Kardon
Speaker



3.5hr Built-in
Battery



- 960 LED lumens output and Full HD native resolution, plus 4K compatibility
- Short-throw lens projects a 40-inch image from one meter, and up to a 120-inch image at three meters
- Includes Google Certified Android TV box with preloaded Netflix
- Connectivity includes Chromecast, HDMI, one USB-C with DP Alt mode and one USB-C for charging, USB Type-A (5 V/1.5 A) and earphone jack
- ASUS Light Wall includes 26 different cinemagraphs for variable ambiances
- Instant autofocus and H/V keystone and four-corner correction





ASUS ProArt Display Professional Monitor (PA27JCV)

Redefine Your 5K Dream

The ProArt Display PA27JCV is a 27-inch 5K HDR monitor for content creators. Calman Verified, it offers wide gamut coverage (99% DCI-P3, 100% sRGB, 95% Adobe RGB) and factory-calibrated Delta E<2 color accuracy. Features include Auto KVM, ambient light/backlight sensors, and USB-C with DisplayPort and 96W power delivery.

• **5120 x 2880 Resolution**
Larger working canvas

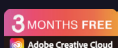
• **218 PPI**
Sharp details

• **99% DCI-P3**
Wide color gamut

• **Delta < 2**
Color accuracy



- 27-inch 5K (5120 x 2880) LuxPixel™ AGLR display with IPS 178° wide viewing angle panel
- International color standard 99% DCI-P3 and 100% sRGB wide color gamut
- Calman Verified with factory calibrated for excellent Delta E < 2 color accuracy
- Extensive connectivity including DisplayPort over USB-C with 96W Power Delivery, DisplayPort, HDMI and USB hub
- Light Sync solution support Ambient Light Sensor and Backlight Sensor for reliable color performance from the start
- Built-in Auto KVM allows for effortless switching between two connected laptops or PCs with a single keyboard and mouse
- Ergonomic design with tilt, swivel, pivot and height adjustments for a comfortable viewing experience
- Green Sustainability: paper packaging and energy-efficient environmental standards



ASUS ProArt Display Professional Monitor (PA279CRV)

All the Essentials for Pros

• **4K HDR**
3840 x 2160

• **99% DCI-P3 / Adobe RGB**
Wide color gamut

• **Delta < 2**
Color accuracy



- 27-inch 4K (3840 x 2160) LED backlight HDR display with 178° wide-view IPS panel
- Wide color gamut with 99% DCI-P3 and 99% Adobe RGB coverage
- Calman Verified and factory pre-calibrated to Delta E < 2 color accuracy
- Extensive connectivity, including DisplayPort™ over USB-C® with 96-watt Power Delivery, DisplayPort™, HDMI®, and USB hub
- Slim profile and compact base, plus wall-mountable design to maximize desk space
- Ergonomic design with tilt, swivel, pivot, and height adjustments for comfortable viewing
- Green sustainability with paper packaging and energy-efficient performance that meets environmental standards



ASUS ProArt Display Professional Monitor (PA34CNV)

All the Essentials for Pros

• **21:9 Screen ratio**
3800R Curvature

• **100% sRGB/ Rec.709**
Wide color gamut

• **Delta < 2**
Color accuracy

• **USB-C Docking**
PD 96W



- 34.1-inch 21:9 3800R IPS curved display with frameless design
- International color standard 100% sRGB and 100% Rec. 709 wide color gamut
- Calman Verified with factory calibrated for excellent Delta E < 2 color accuracy
- Extensive connectivity including DisplayPort over USB-C with 96W Power Delivery, DisplayPort daisy-chaining, HDMI, USB hub and RJ45 LAN port for the most flexibility
- Ergonomic design with tilt, swivel and height adjustments for a comfortable viewing experience
- Green Sustainability: paper packaging and energy-efficient environmental standards



ASUS WEBCAM MONITOR (BE24ECSNK/BE27ACSBK)

The Complete Videoconferencing Solution



AI Noise-Canceling Mic



Compatible with Major Videoconferencing Software



Protect your eyes with ASUS Eye Care technology



The USB-C That Does It All



- 23.8-inch/27-inch Full HD(1920x1080) frameless IPS panel with wide viewing angles.
- ASUS AI Noise-Canceling Microphone offers crystal-clear voice communication
- Face Auto Exposure technology helps users' face to stand out from the background and keep the image crisp.
- Extensive connectivity with HDMI, USB-C, DisplayPort, DisplayPort out for daisy-chain, earphone jack, USB hub and RJ45 LAN port for the most flexibility.
- USB-C port allows simple laptop docking for data transmission and video signal to the display, as well as charging the laptop via just one cable.
- Zoom Certified monitor has undergone comprehensive testing and review processes to ensure seamless communication.



ASUS ZenScreen (MB229CF/MB249C/MB27ACF)

Redefine Your Workspace



USB Type-C PD 60 W



Rapid Refresh Rate (MB229CF/MB27ACF)



Come with Monitor Arm



Built-in Audio 2.1 Channel speakers



- From 22-inch up to 27-inch FHD IPS display with sleek, ultraslim profile and transportable
- Multiple stand options and accessories, including an integrated carrying handle/kickstand, height-adjustable C-clamp with Z-axis adjustment
- Partition hook kit for flexible placement
- Rich connectivity options include a full-function USB-C® with 60-watt power delivery, HDMI®, and earphone jack
- Powerful 2.1-channel audio with subwoofer for exceptionally well-balanced audio
- Environmentally friendly design with ENERGY STAR®-certified energy efficiency, and packaged in FSC® certified paper



ASUS Business Touch Monitor (BE24ECSBT/Touch)

Boost Your Productivity On-The-Go



VESA Wall Mounting :
100x100mm



Ergonomic
stand design



10-point multi-
touch capacity



USB Type-C
Monitor



- 23.8-inch Full HD(1920x1080) frameless IPS panel with wide viewing angles
- 10-point multi-touch capacity delivers smooth and intuitive touch experience.
- Extensive connectivity with USB-C with power delivery, HDMI, DisplayPort in and out for daisy-chain, Earphone jack and USB hub for the most flexibility
- Ergonomic design with +35° ~ -5° tilt, ±180° swivel, ±90° pivot and 130mm height adjustments for a comfortable viewing experience
- USB-C port allows simple laptop docking for data transmission and video signal to the display, as well as up to 80W power delivery to the laptop via just one cable.



ASUS ZenScreen Portable Monitor (MB16ACV)

Boost Your Productivity On-The-Go



The USB-C
That Does It All



0.9Kg (1.98 lbs)
Ultra lightweight



Protect your eyes
with ASUS Eye
Care technology



Inhibiting up to
99.9% bacterial



- 15.6-inch Full HD portable anti-glare IPS display with an ultraslim and thin design helps you get things done more efficiently when you're on the go
- Kickstand design prop the monitor up in either portrait or landscape mode easily.
- Features a hybrid-signal solution that supports power and video transmission, and enables compatibility with any laptop with a USB Type-C or Type A port.
- ASUS Eye Care monitors feature TÜV Rheinland-certified Low Blue Light technology to ensure a comfortable viewing experience.
- Proprietary long-lasting antibacterial treatment inhibits the growth of bacteria and fungi on the monitor.



ASUS Business Monitor (BE248CFN/BE248QF)

The Complete Videoconferencing Solution

• WUXGA(1920x1200),
100Hz refresh, 100% sRGB

• USB-C, displayPort 1.4 for Daisy
Chain, and RJ45 (BE248CFN)

• VGA
(BE248QF)

• Ergonomic
design



- 24.1-inch WUXGA(1920x1200) frameless IPS panel with wide viewing angles and 100% sRGB.
- SmoothMotion 100Hz refresh rate delivers a seamless, tear-free visual experience
- Extensive connectivity with HDMI, USB-C, DisplayPort, DisplayPort out for daisy-chain, earphone jack, USB hub and RJ45 LAN port for the most flexibility.
- USB-C port allows simple laptop docking for data transmission and video signal to the display, as well as charging the laptop via just one cable.
- Ergonomic design with +35° ~ -5° tilt, ±180° swivel, ±90° pivot and 130mm height adjustments for a comfortable viewing experience.
- ASUS Eye Care monitors feature TÜV Rheinland-certified Flicker-free and Low Blue Light technologies to ensure a comfortable viewing experience.



ASUS VU Monitor (VU249HFI-W/VU34HFI-W)

Designed for Well-Being



Air ionizer
Up to 90% Less Dust

• TÜV
Rheinland-certified

• Ergonomic
adjustable design

• 100 Hz
High re-fresh rate



- 23.8" Full HD frameless design with IPS 178° wide viewing angle panel
- Built-in Nano-ion generator to enhance air quality in indoor environment
- SmoothMotion technology with up to 100Hz refresh rate and 1ms MPRT eliminate tracing and ensure crisp and clear video playback and daily usage
- Green sustainability with paper packaging and energy-efficient performance that meets environmental standards
- Eye Care Plus technology and TÜV Rheinland-certified adjustable Blue Light Filter and ASUS Flicker Free technology ensure comfortable viewing



ASUS Docking Monitor (VA27ECPSN)

Enhance Your Productivity

• **4K 3840 x 2160**
HDR 400

• **99%**
Adobe RGB

• **99% DCI-P3**
Wide color gamut

• **Delta < 2**
Color accuracy



- 27-inch Full HD (1920 x 1080) resolution with IPS 178° wide viewing angle panel
- Extensive connectivity with HDMI, USB-C, DisplayPort, earphone jack, USB hub and RJ45 LAN port for the most flexibility
- USB-C port allows simple laptop docking for data transmission and video signal to the display, as well as up to 65W charging the laptop via just one cable
- Up to 75Hz refresh rate with Adaptive-Sync technology to eliminate tracing and ensure crisp and smooth viewing experience
- Ergonomic design with tilt, swivel, pivot and height adjustments for a comfortable viewing position
- ASUS Eye Care monitors feature TÜV Rheinland-certified Flicker-free and Low Blue Light technologies to ensure a comfortable viewing experience
- Supports both Adaptive-Sync with NVIDIA GeForce* graphics cards and FreeSync with AMD Radeon graphics cards *Compatible with NVIDIA GeForce GTX 10 series, GTX 16 series, RTX 20 series and newer graphics cards



ASUS Multitouch Monitor (VT229H)

An Incredibly intuitive touch experience



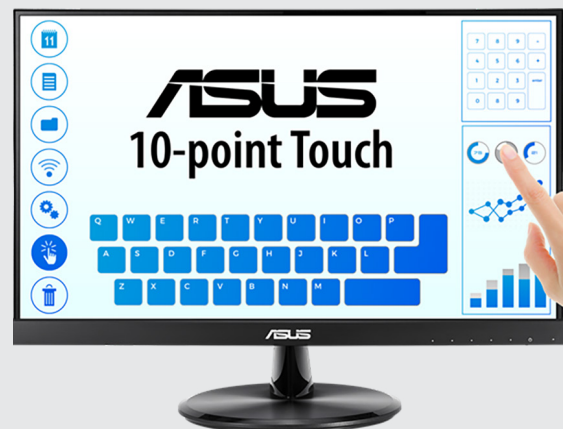
Windows 10 and 11 compliance

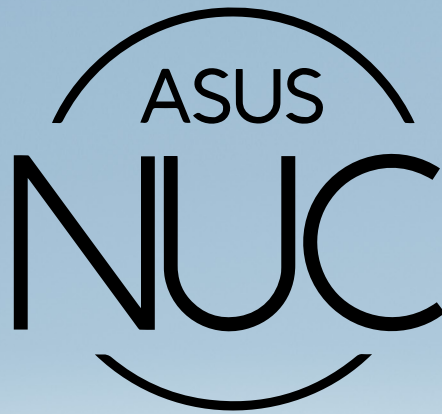


Protect your eyes with ASUS Eye Care technology



- 21.5" Full HD IPS technology with stunningly wide 178° viewing angles
- 10-point multi-touch capacity featuring 7H hardness screen delivers smooth and durable touch experience.
- Windows 11/ 10 compliance
- Its frameless design makes it perfect for almost-seamless multi-display setups
- ASUS Eye Care monitors feature TÜV Rheinland-certified Flicker-free and Low Blue Light technologies to ensure a comfortable viewing experience





Redefining Versatility and Innovation

The ASUS NUC brand represents a commitment to technological excellence, prioritizing innovative product design, to push the boundaries of performance and user experience.

Developed through a partnership between ASUS and Intel, the ASUS NUC product lines anchor on delivering uncompromised performance in the smallest form factors, backed by industry best quality and reliability, innovative modular designs, extended life span options, smart cooling solutions, and advanced AI capabilities. The versatility of the products shines through an array of configurations catering to diverse user needs, from developers, to power users, to casual home use. Positioned as the preferred choice for a variety of business applications, vertical industries, and everyday users, the ASUS NUC combines exceptional performance with essential features, aiming to shape the next generation of PC experiences.

With a focus on supporting diverse businesses and enhancing PC applications, the ASUS NUC aspires to deliver on the brand promise of delivering the Next Unit of Compute (NUC) and make a lasting impact in the ever-evolving tech landscape.



ASUS NUC 14 Pro+ Style Meets Performance

Featuring up to an Intel® Core™ Ultra 9 processor, the NUC 14 Pro+ effortlessly handles intensive AI workloads within its stylish aluminum chassis. With support for a stunning 4K quad display, it offers an immersive and productive visual experience.

• Up to Intel® Core™
Ultra 9 Processor

• Dual-Channel DDR5-5600MHz
SODIMMs, up to 48GB x2

• Unlocked AI
Usage

• Support Quad
Display



- Latest Intel® Core™ Ultra processors, Intel® Arc™ GPUs, and Intel® AI Boost for all compute needs
- Certified Bluetooth® for seamless connectivity
- Wi-Fi sensing for instant availability and reduced power consumption
- Toolless chassis access for easy, safe, and fast upgrades
- Eye-catching 5 x 4-inch anodized aluminum chassis
- Superior performance surpassing other competitive mini-PCs



ASUS NUC 14 Pro

Compact Power, Intelligent Performance

- Up to Intel® Core™ Ultra 7 Processor
- Dual-Channel DDR5-5600MHz SODIMMs, up to 48GB x2
- Intel vPro® Enterprise for Comprehensive Security and Remote Management
- AI Ready for Optimal Performance



- Intel® Core™ Ultra processors with three AI engines for high throughput and fast response
- Intel vPro® Enterprise for exceptional security, manageability, and stability
- Wi-Fi sensing for instant availability and reduced power consumption
- Certified Bluetooth® dongle-free for seamless connectivity
- Toolless access 4x4-inch chassis for easier, safer, and faster upgrades
- Best-in-class performance among comparable mini-PC offerings



NUC 14 Pro (Slim)



NUC 14 Pro (Tall)

ASUS NUC 14 Performance

Level Up. Embrace intelligence.

- Up to Intel® Core™ Ultra 9 Processor
- NVIDIA® GeForce RTX™ 4070 or RTX™ 4060 Discrete Graphics
- Unparalleled Multitasking with Support for Up to Five 4K Displays
- Dual-Channel DDR5-4400MHz SODIMMs, up to 32GB x2



- Performance: Achieve top-tier Intel® Core™ Ultra 9 performance with our mini-PC, surpassing all expectations
- Speed: NVIDIA® GeForce RTX™ 4070/4060 Discrete Graphics are beyond fast for business productivity
- Five 4K Display: Efficiently control and manage your calendar, meetings, cloud files, and emails without compromising productivity
- Flexible: The stand provides better versatility in various placement options, making it easier to plug and unplug cables
- AI Ready: Exploits the prowess of Intel® Core™ Ultra processors' three AI engines – GPU, NPU, and CPU – for high throughput, low power, and quick reaction





ASUS ExpertCenter PN65

Unleash Compact Power for Business and Industrial Use

The ASUS ExpertCenter PN65 is your ultimate solution, delivering robust performance tailored for both business and industrial applications. Powered by Intel® Core™ Ultra 7 processor 155H or Intel® Core™ Ultra 5 processor 125H with Intel® Arc™ Graphics, it achieves the perfect balance of power and efficiency. Customize it to your preferences with various multi-storage configurations, including dual high-speed PCIe® Gen 4 SSD for rapid boot-up and app loading.

- Up to Intel® Core™ Ultra 7 Processor
- Dual-Channel DDR5-5600MHz SODIMMs, up to 48GB x2
- Quad 4K UHD Display Support
- Exceptional wireless performance with Wi-Fi 7, Wi-Fi 6E, and Wi-Fi 6



- Robust computing power for AI applications, such as object recognition and sound detection
- Versatile I/O support with DP port, HDMI, VGA, COM or LAN
- Suitable for various uses like signage, Kiosk, POS system, and intelligent vending machine
- Innovative cooling and anti-dust self-cleaning system
- Quad-display support or 4K UHD resolution at 60 Hz
- Compact size of under 1 liter



ASUS ExpertCenter PN43

• Powered by Intel® Processor
N97, N200 and N100

• Enhanced Durability
and Thermal Design

• Support up to
3 Displays

• Ultrafast WiFi 6 / WiFi 6E



- Silent fanless models or performance-boosting fan models available
- Ultrafast WiFi 6 / WiFi 6E and Bluetooth for seamless wireless connections
- AI noise-cancellation for clear online meeting communication
- Versatile I/O support with DP port, HDMI, Type-C with DP, COM, or VGA
- Supports up to 3 displays simultaneously or dual 4K displays
- Compact size of under 0.67 liter



ASUS ExpertCenter PB63

Solid Reliability for Your Business

• Up to Intel® Core™
i7 processor 14700K

• Dual-Channel DDR5-5600MHz
SODIMMs, up to 32GB x2

• Supports Triple Displays
and 4K Resolution

• MIL-STD-810H Military
Standard for Harsh
Environments



- Supports 13/14th Gen Intel® Core™ Processors, Intel® Pentium® Gold Processors, and Intel Celeron Processors
- Ultrafast Gig+ wireless speeds with Intel Wi-Fi 6E and Bluetooth 5.2
- Versatile I/O support with DP port, VGA, LAN, COM, or HDMI
- Optional accessories available: optical drive, VESA mount, vertical stand
- 24/7 reliability tested for stable operation
- Ideal for offices, hospitals, digital signage, or retail environments



ASUS NUC 13 Rugged

Reliable Performance in Unreliable Conditions

- Withstand 0-50° external ambient temperatures
- IP50-rated fanless and dust-resistant chassis
- Qualified for 24/7 sustained operation
- Featuring the Intel® Processor N50 and Intel® Atom® processors



- Designed for applications requiring resilience against dust exposure, shocks, and vibration
- Kits and boards offer high performance, connectivity, and reliability in a fanless, ruggedized chassis
- Can withstand operating temperatures of 0° to 50°C (select kits)
- Features Intel® Atom® x7425E / Intel® Atom® x7211E / Intel® Processor N50
- Versatile platform for edge solutions with small form factor, long platform life, and expandable I/O
- Qualified for 24x7 sustained operation, reliable for long-term and intensive use"



ASUS Mini PC PL64-D1

Compact, Fanless, Reliable

Built for Indoor Industrial Applications

- Up to 12th Gen Intel® Core™ i7 processors
- Dual-Channel DDR4-3200MHz SODIMMs, up to 32GB x2
- Supports Triple Displays and 4K Resolution
- MIL-STD-810H Military Standard



- Supports 12th gen Intel® Core™ mobile processor with Intel® Iris Xe Graphics
- Triple LAN ports with PoE+ support for easy PTZ camera connections
- Multiple mounting options with a Z-height of less than 35mm for versatile usage scenarios
- Ideal for surveillance, digital signage, retail, machine vision, and IoT control units
- Operates in up to 50°C ambient temperature
- MIL-STD-810H standard and extensive 24/7 testing for long-term reliability



ASUS Chromebox 5a

Simple, Speedy, and Secure

- Built-in Google Play support
- Support ChromeOS with Advanced Security Features
- Up to 13th Gen Intel® Core™ i7 Processor
- Dual-Channel DDR4-3200MHz SODIMMs, up to 32GB x2



- Powered by 13th Generation Intel® Core™ or Celeron® processors
- Supports up to four 4K displays
- Intel® WiFi 6E for ultrafast network speeds
- Comprehensive business-grade security against viruses, malware, and security threats
- MIL-STD-810H military-grade reliability
- Made of Post-Consumer Recycled Plastic (PCR) with a durable scratch-resistant textured surface for sustainability



ASUS Fanless Chromebox CF40

Built for Diverse Commercial Applications

- Powered by Intel® Celeron™ N4500 Processor
- Fanless design for Extremely Quiet Operation
- Support ChromeOS with Advanced Security Features
- Advanced Cooling



- Ideal for POS, warehouse, Kiosk, and wayfinding applications
- Fanless design for stable thermal performance in any environment
- Supports dual 4K displays
- Built-in Google Play support for access to a wide range of Android apps
- Automatic software and security updates for virus and malware protection



ASUS - Google Meet hardware kit

Meetings with Anyone, Anywhere!

• Immersive HD
Meeting Experience

• Face-to-Face
Audio Quality

• Stylish and Reliable
Compute System

• Suitable for Meetings
of Various Sizes



- Smart one-touch video conferencing solution
- Vivid and smooth 4K full HD resolution for stunning video conferencing
- Peripheral options include ePTZ UHD camera, PTZ camera, speakerphone, touch control panel, and remote control
- Supports meetings of all sizes, from small huddle rooms to large conference and boardrooms
- Daisy chainable speakerphones with 360° pickup, duplex echo cancellation, and noise suppression support.





Your Business Network Expert Within Reach

ASUS router consistently earns top marks for satisfaction, setup, reliability, technical support, and value in the small office/home office (SOHO) and small-to-midsize business (SMB) users. Our commitment to WiFi and networking innovation and customer satisfaction establishes ASUS as a worry-free choice for businesses worldwide. The ASUS ExpertWiFi series caters to businesses of all sizes, encompassing wireless access point, network switch, wired VPN router and all-in-one WiFi routers. It provides fast, secure, and user-friendly business network solutions that enhance productivity and reduce total cost of ownership. Easy setup and powerful management: ASUS ExpertWiFi Mobile App and Multi-Site Manager.

ASUS ExpertWiFi (EBA63)

- Dual-Band WiFi 6
- Gigabit PoE+
- 2400 sq.ft. coverage
- 100+ connected devices



- Seamless and Extendable Connections — Enjoy uninterrupted roaming with WiFi 6 speeds of up to 3000 Mbps, support for up to 100 active devices and easy scalability to meet the evolving needs of your business network.
- Secure and Segmented Networking — Easy WiFi network settings via Self-defined Networks, and enhanced business security with VLAN support, offering up to five SSIDs for device segregation and prioritization in diverse business scenarios.
- Flexible Deployment with PoE — Support for both Power over Ethernet (PoE) connection and AC adapters, providing versatile options for installation.
- Accommodate to Any Space — Supports ceiling and wall mounting to fit into various business environments with more flexibility.
- Built for Safety and Reliability — Compliant with IEC 60601-1-2 standards, and with the top half of the device made of materials that meet the UL94 5VB plastics flammability standard*, the EBA63 ensures a stable and reliable connection.



- Only the top half of the EBA63 is constructed using UL94 5VB plastics flammability standard material.

- The ASUS ExpertWiFi series is compatible with ASUS AiMesh products; however, the functionality of software features is subject to the capabilities of the primary router. The availability of some ExpertWiFi features may also depend on whether the AiMesh router supports them.

ASUS ExpertWiFi (EBR63)

- Dual-Band WiFi 6
- Self-Defined Network (SDN)
- Extendable AiMesh
- Commercial-Grade Network Security



- Secure and Segmented Networking — Easy business WiFi network settings via Self-Defined Networks, and enhanced business security with VLAN support, offering up to five SSIDs for device segregation and prioritization in diverse business scenarios.
- Customizable Guest Portal — Guest portals can be tailored to meet your business needs, with custom portal types, branding and visual templates to fit particular business styles
- Backup WAN for Stable Connectivity — The USB port can be used as a backup WAN by connecting it to a mobile phone with hotspot to maintain a reliable internet connection
- Commercial-Grade Network Security and VPN — Safe Browsing, VPN features to connect easily and securely to public WiFi, and a free subscription to ASUS AiProtection Pro
- Accommodate to Any Space — The EBR63 comes with a built-in bracket and wall mount hole that can be adjusted to fit into almost any location for space-saving and more flexibility



- The ASUS ExpertWiFi series is compatible with all ASUS AiMesh products, but supported features may vary based on model.

ASUS ExpertWiFi (EBG19P)

- Up to 3 WAN Ethernet Ports with load balancing and failover
- 8 PoE+ ports
- 1.5 Gbps IDS/IPS throughput
- Commercial-Grade Network Security



- Power over Ethernet — 8 PoE ports capable of delivering up to 123 watts of power offer a convenient solution for powering various PoE-enabled devices.
- VLAN for Added Security — Each of the Ethernet ports can be assigned to one or more VLAN IDs that provides additional security for your business.
- Up to 3 WAN Ethernet Ports — 1 gigabit WAN port and 2 gigabit WAN/LAN ports with load balancing optimize multi-line broadband usage. Besides, the USB port can be used as a backup WAN by connecting it to a mobile phone with hotspot to maintain a reliable internet connection.
- Device Management Made Easy — Conveniently centralized control over the PoE devices like EBA63 connected to the EBG19P via web browser or the ASUS ExpertWiFi mobile app.
- Commercial-Grade Network Security and VPN — Secure public WiFi connections with Safe Browsing and VPN features. Enjoy a free-subscription ASUS AiProtection Pro, including robust intrusion prevention system (IPS) features like deep packet inspection (DPI) and virtual patching to block malicious traffic.



- The ASUS ExpertWiFi series is compatible with ASUS AiMesh products; however, the functionality of software features is subject to the capabilities of the primary router. The availability of some ExpertWiFi features may also depend on whether the AiMesh router supports them.

ASUS ExpertWiFi (EBG15)

- Up to 3 WAN Ethernet Ports with load balancing and failover
- 1.5 Gbps IDS/IPS throughput
- Site-to-Site VPN
- Commercial-Grade Network Security



- Easier-Than-Ever Setup — Convenient and easy router management via web browser or the ASUS ExpertWiFi mobile app through Bluetooth setup.
- VLAN for Added Security — Each of the Ethernet ports can be assigned to one or more VLAN IDs that provides additional security for your business.
- Up to 3 WAN Ethernet Ports — 1 gigabit WAN port and 2 gigabit WAN/LAN ports with load balancing optimize multi-line broadband usage.
- Backup WAN for Stable Connectivity — The USB port can be used as a backup WAN by connecting it to a mobile phone with hotspot to maintain a reliable internet connection.
- Commercial-Grade Network Security and VPN — Secure public WiFi connections with Safe Browsing and VPN features. Enjoy a free-subscription ASUS AiProtection Pro, including robust intrusion prevention system (IPS) features like deep packet inspection (DPI) and virtual patching to block malicious traffic.



ASUS ExpertWiFi (EBP15)

- 5 x Gigabit Ports
- 4 x PoE+ Ports with 60W PoE Budget
- Support VLAN, QoS and IGMP snooping
- Wall mount and Desktop

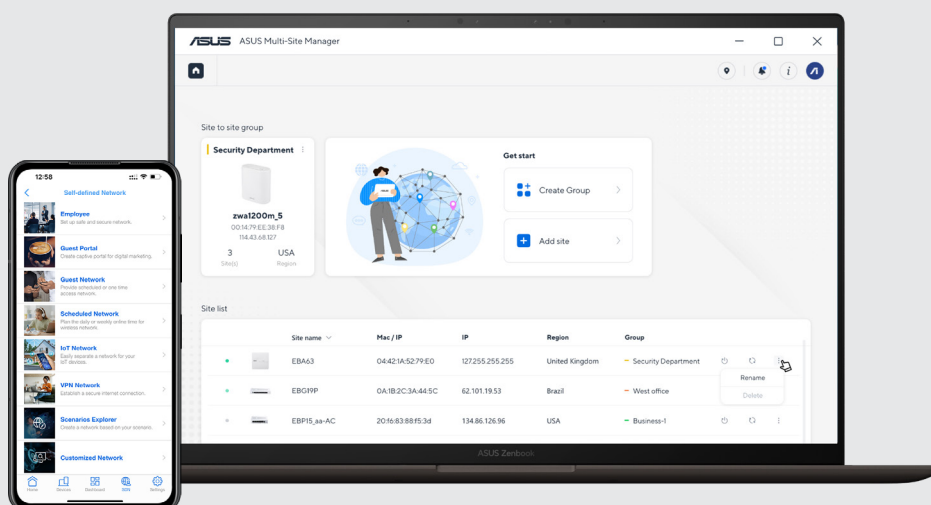


- Power over Ethernet — 4 PoE+ ports capable of delivering up to 60 watts of power offer a convenient solution for powering various PoE-enabled devices.
- VLAN for Added Security — Each of the Ethernet ports can be assigned to one or more VLAN IDs that provides additional security for your business.
- Fluent Network Experience with QoS — Dedicated bandwidth priority based on Quality of Service traffic management ensures better delivery of mission-critical traffic such as voice and video, without delay.
- Multimedia Traffic Optimization — IGMP snooping to prevent traffic congestion and optimize multicast traffic distribution, ensuring better network experiences during video conferencing or media streaming.
- Device Management Made Easy — The ASUS ExpertWiFi router on your network enables conveniently centralized control over the EBP15 and connected devices.



ASUS ExpertWiFi (Mobile App) & Multi-Site Manager

- The ASUS ExpertWiFi series delivers robust security and streamlined management for your business network. Monitor and control your network from anywhere with the ASUS ExpertWiFi mobile app, featuring comprehensive security, VPN and network management tools. For businesses with multiple locations, ASUS Multi-Site Manager enables centralized administration of up to 30 sites, including effortless site-to-site VPN setup.





DOWNLOAD
2025 ASUS EDUCATION
SERIES CATALOGUE AT

